




# **The Annual Report to the Community**

By: Larry N. Arft  
City Manager  
January, 2009



## **The City Continues its “Renaissance” to a High Quality Community, Despite the Weak Economy**

- The City continues to use Sustainable Public Policy decisions to create a high quality community, competitive in the 21<sup>st</sup> Century economy.

# The City's Strategic Plan Supports this Initiative

## **VISION STATEMENT:**

- Beloit – The gem of the Rock River Valley, embracing sustainable public policy, service delivery and development in ways that protect the natural and built environment, maintain economic competitiveness and create a high quality living experience for current and future generations.

## **MISSION STATEMENT:**

- The City of Beloit celebrates its proud heritage, diverse culture, entrepreneurial spirit and stewardship of a high quality of life; employing sustainable practices to continue its resurgence as the gem of the Rock River Valley.

# Five Key Goals

1. As an eco-municipality, focus on the sustainable stewardship of City resources, services and infrastructure; to protect both our built and natural environment and enhance the quality of life for current and future generations.
2. Continue competitive and sustainable economic development focused on retention and recruitment to fully serve the business and entrepreneurial community resulting in private investment and job creation.
3. Proactively partner with individuals and businesses to promote a safe and healthy community, minimize personal injury, prevent loss of life and protect property and natural resources.
4. Apply sound, sustainable practices to promote a high quality community through historic preservation, community revitalization and successful new development.
5. Communicate and partner with other jurisdictions and organizations to coordinate effective and efficient service delivery and stimulate regional prosperity.

# Policy Decisions Reflect the Eco-Municipality Focus

- All Council decisions consider the four sustainability guidelines:
  - Reduce dependence upon fossil fuels
  - Reduce dependence on chemicals and other manufacturing substances that accumulate in nature
  - Reduce dependence on activities that harm life sustaining eco-systems
  - Meet the hierarchy of present and future human needs fairly and efficiently

# The City Continues its Eco-Municipality Focus on Sustainability

- The City incorporated \$100,000 for energy/environmental upgrades in 2009 CIP
- Beloit College opens new Science building with green roof and LEEDS certification
- City experiments with alternative fuels – hydrogen electrolysis
- Landscaping and site development standards continue to produce quality development (Ace, Walgreens, Kerry, CVS, Hampton Inn)
- E-government initiative saves paper



**Public Institutions and Services  
Continue to Play a Key Role in  
Making the City a High Quality Place**

# Beloit College



Logan Museum of  
Anthropology



Middle College –  
Leaves covering  
an Indian mound



# Beloit Public Education



Learning from a Senior Volunteer at Royce



Family Math Night at Burdge



BMHS Hockey Team



BMHS Destination ImagiNation Global Champions



Music in the Schools



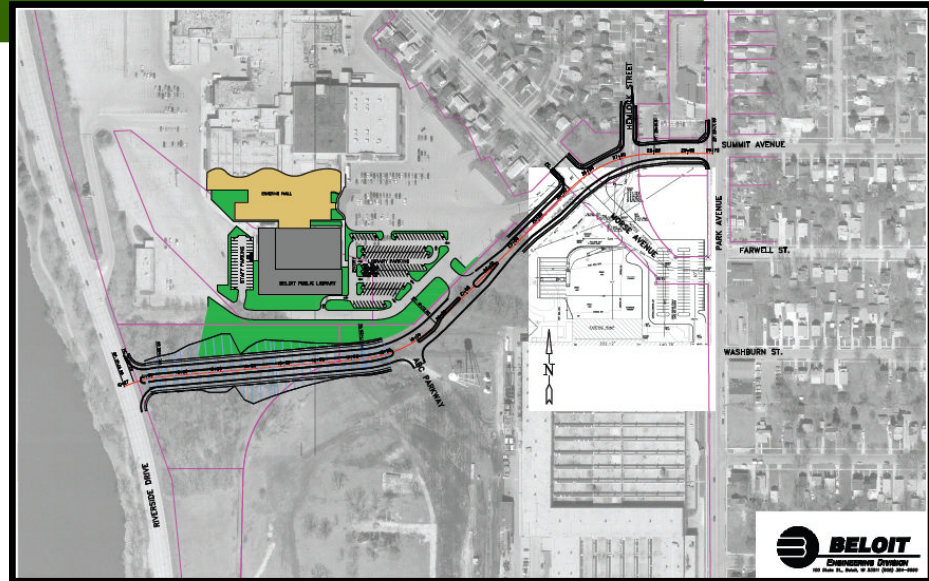
Opera at BMHS

# Beloit Public Library



## Proposed Library Building

- Scheduled for opening in April, 2009



- Former Beloit Mall is being redeveloped for commercial office and institutional facilities
- Drawing shows the alignment of Eclipse Blvd.

# Maintain Critical Public Safety Services - Fire



Arson Investigation

Paramedic Program

Car Seat Safety Checks

Prom Night Alcohol Use  
Prevention

Water Rescue Team



# Maintain Critical Public Safety Services - Police



K-9 Unit

Evidence Technician Unit

Honor Guard

Crisis Negotiation Unit

Police Chaplains

School Resource Officers

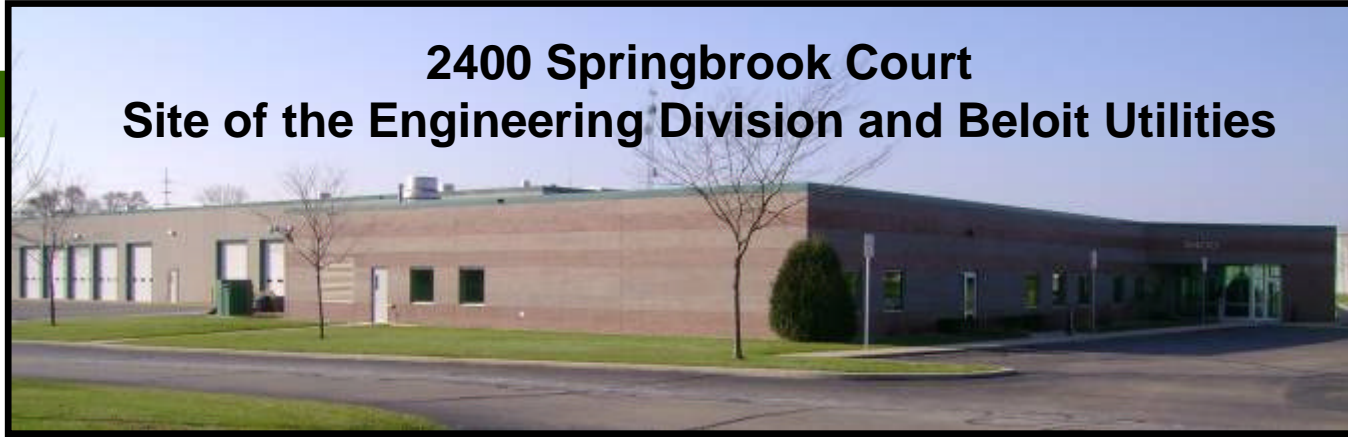
Drug and Gang Intervention

Special Weapons and Tactics Team

Graffiti Abatement Project

# Public Works and Utilities

**2400 Springbrook Court  
Site of the Engineering Division and Beloit Utilities**



**Wastewater Treatment Plant  
Administration Building**



# Beloit Transit Serves the Community

- Beloit Transit System operates six days a week with clean, modern buses
- Beloit Transit System has consistently earned safety awards from their insurance carrier



# Transit Transfer Facility

- Mill Street relocation
- New bus transfer facility for downtown



# Parks and Leisure Activities

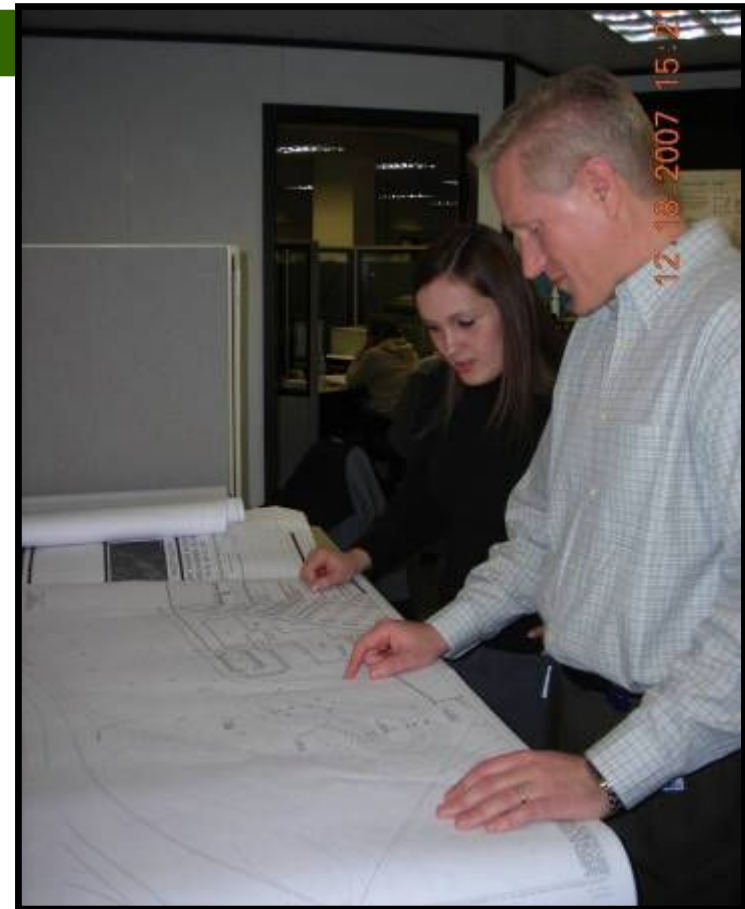


Grinnell Hall, Krueger Municipal Pool, Big Hill Park, Beloit Youth Hockey and sledding on Hospital Hill



# Community Development and Construction Standards

- Community Development
  - Housing assistance and services
  - Community Development Block Grant allocations
  - City-wide property maintenance code enforcement
  - Rental property permit program
- Construction Standards
  - State building code standards
  - Zoning and contemporary land use requirements
  - Site plan review and landscaping standards
  - Architectural review certificates





**Beloit Continues Focus on its World  
Class Riverfront, with Assistance from  
Beloit 2020 and the Friends of the  
Riverfront**

# South End (Ace Property) Reconstruction for Park Land

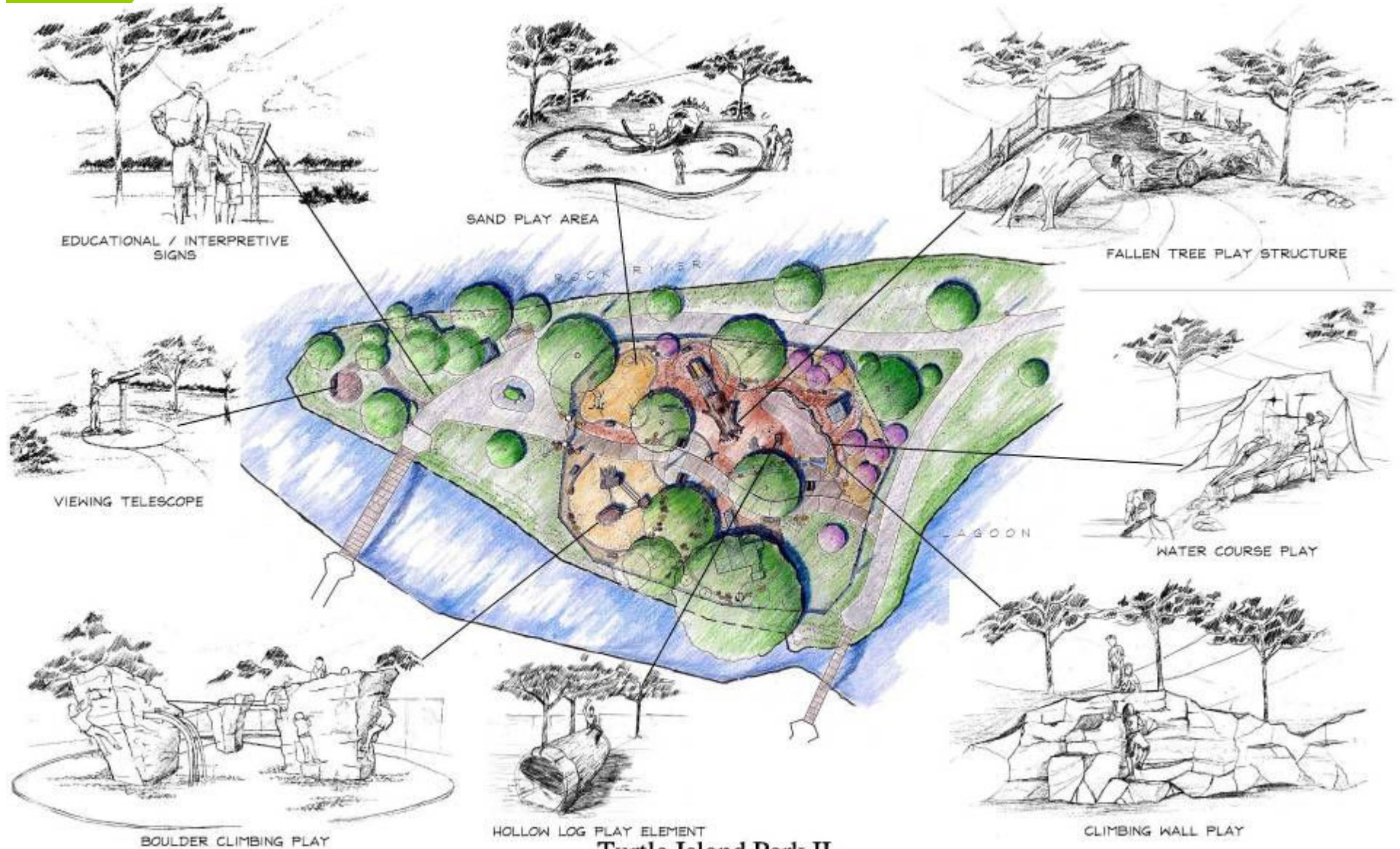


# Turtle Island Redevelopment

## Playground Theme – “Discovery and Exploration”

- Water - We can get close but....we can't get wet! = Water Play!
- Watercourse to play in, pump water, dam up water, log bridges, etc. (i.e. action/reaction)
- Sand - Every kid loves digging in the sandbox...discover hidden artifacts, and buried treasures (i.e. Dinosaur eggs, fossils, etc.)
- Large Tree Play – Climbing, exploration, suspension bridge, slide, etc.
- Island Inhabitants – Cast animal and other exotic sculptures
- Exotic Fossils – Cast in FGRC or other materials
- Interpretive/Education Signs – History of Beloit and RCA, ecology, etc.
- Conventional & non-conventional play equipment (i.e. spring riders, custom log elements, etc.)
- Custom Structures (i.e. Skeletons, Hollow logs, Lookout, etc.)
- Native landscape borders & rain gardens

# Turtle Island Redevelopment



SCHREIBER / ANDERSON ASSOCIATES, INC.  
 717 John Nolen Drive Madison, WI 53713 608-255-0800  
 LANDSCAPE ARCHITECTS URBAN DESIGNERS PLANNERS CIVIL ENGINEERS

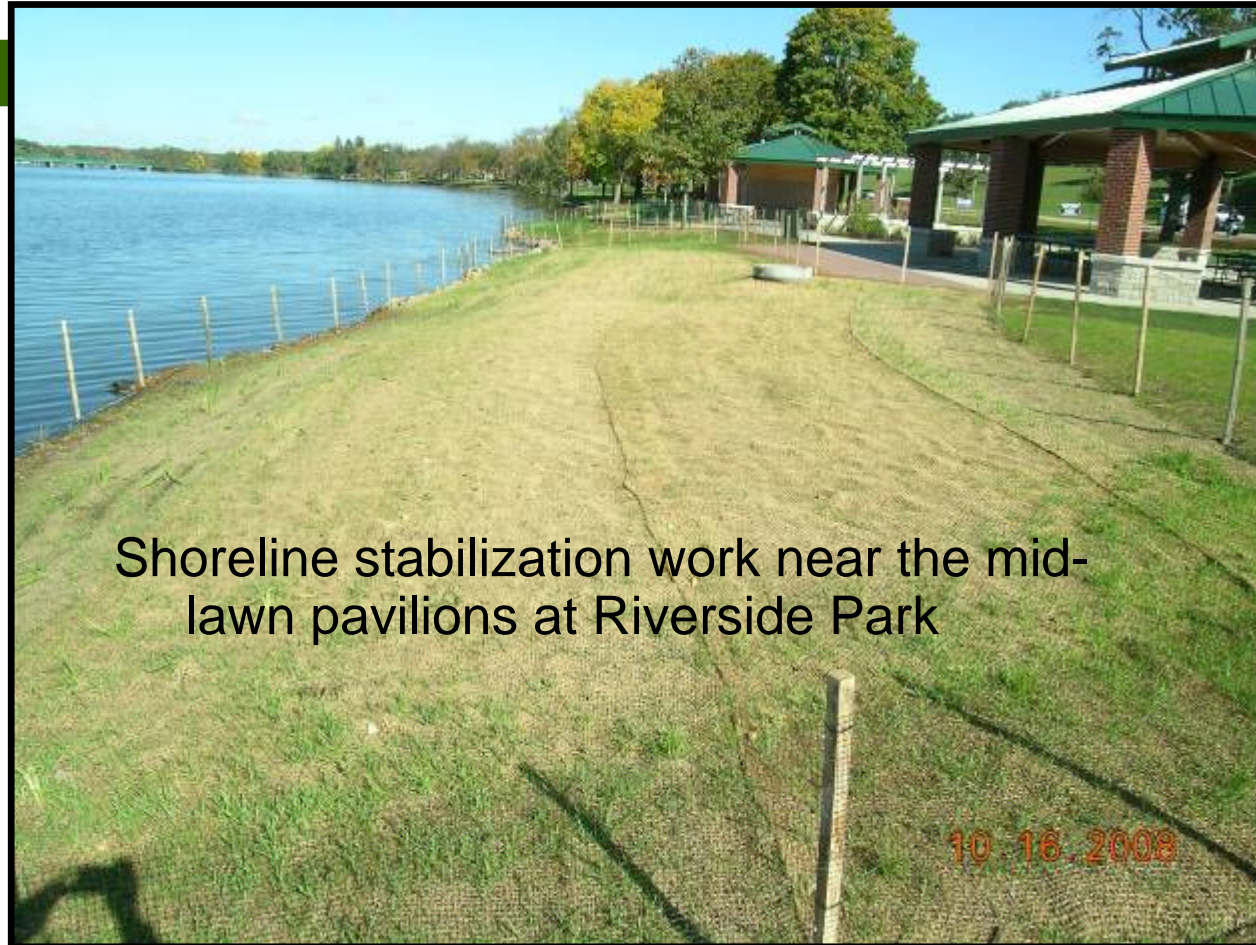
## Turtle Island Park II Beloit, Wisconsin



0 10 20 40  
 Date: 07/11/2008  
 Project No. 2315

CITY OF БЕЛОИТ  
 100 State Street  
 Beloit, Wisconsin 53511

# Shoreline Stabilization



Shoreline stabilization work near the mid-lawn pavilions at Riverside Park

# Riverfront

**Wood  
Family  
Bridge**



**Riverside Park Lagoon**



**New mid-lawn pavilions and  
refurbished tennis courts at  
Riverside Park**

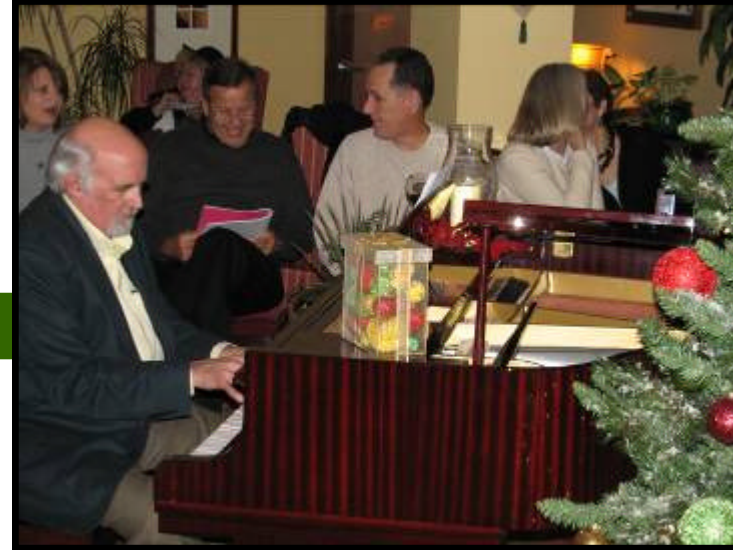


# **Downtown Beloit Remains a Hub of Activity Throughout the Year**



# Downtown Farmer's Market





## Holidazzle and Lighted Parade

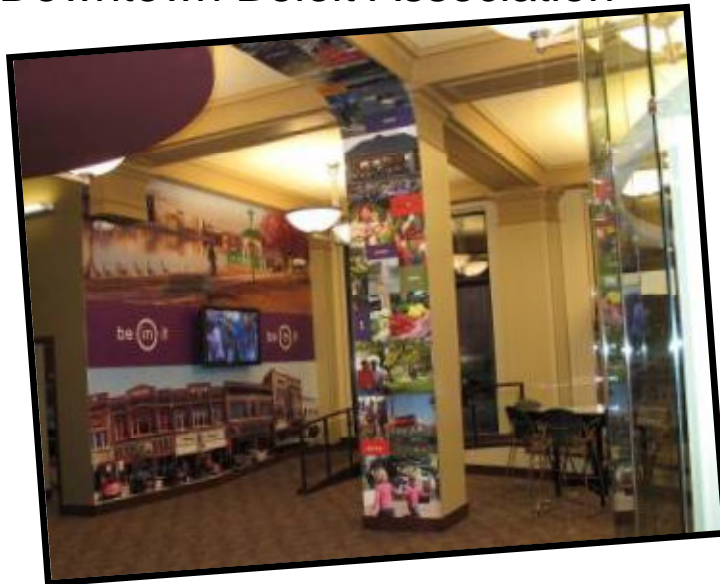


# Vision Beloit Becomes Fully Operational in 2008



# “Vision Beloit” – 500 Public Avenue

- New office space for:
  - Greater Beloit Economic Development Corporation
  - Chamber of Commerce
  - Visit Beloit
  - Downtown Beloit Association




- Vision Beloit celebrates our renaissance and facilitates the vision for continued City Center redevelopment and citywide business recruitment.





# **Economic Development Thrives, Despite a Weak National Economy**

Creating a quality place  
pays huge dividends



# Kerry Corporate Campus

- **124 acres (phased development)**
- **200,000 sq. foot Quality Center of Excellence**
- **50,000 sq. foot administrative/Kerry Americas headquarters**
- **Retained 350 jobs**
- **Create 250 new jobs**
- **Capital Investment: \$44 million**



# Hydroblend (Phase I and II)

- Two buildings totaling 100,000 sq. ft. on Springbrook Ct.
- 70 jobs to be created
- Capital Investment: \$13,400,000







- Serta 60,000 sq. ft. addition
- 30 jobs
- Capital Investment: \$2,000,000



# CVS Pharmacy



Prairie Avenue

Fourth Street

Two newly built stores:

- Total square feet: 26,450
- Total capital investment: \$7,400,000



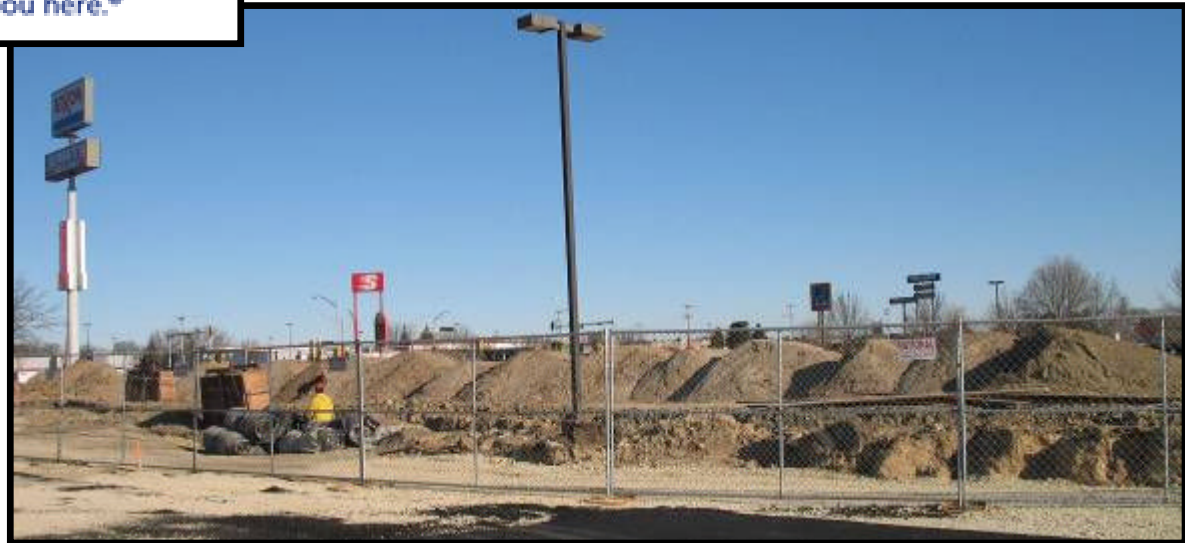
# Hampton Inn & Suites



we love having you here.®

New construction on  
Milwaukee Road

- 15,200 square feet



# Menlo Industries (Gateway) and Spec Building

## Menlo Industries:

- 11 New Jobs
- 100,000 square feet
- Capital Investment: \$4,750,000



## Spec Building constructed next to Menlo in the Gateway:

- 100,000 square feet
- Capital Investment: \$4,500,000

# Gateway Bank Comes to Beloit



# Beloit Country Market

- Renovation of existing vacant building
- 125 new jobs



# IPM Foods



- Renovation of existing building on Harvey Street
- 90 new jobs
- Capital Investment: \$5,000,000

# McDonald's on Madison Road

- Complete take down and rebuild
- 4,245 square feet
- Capital investment: \$1.3 million







**Housing Market Slows Significantly,  
Following National Trends**



# Housing Starts in 2006, 2007 and 2008

\*DU = "Dwelling Unit"

## Permit Activity New Construction

	<b>2006</b>	<b>2007</b>	<b>2008 to date</b>
Single Family	57 permits = 57 DU's	16 permits = 16 DU's	8 permits = 8 DU's
Two-Unit Condos	9 permits = 18 DU's	1 permit = 1 DU	0 permits = 0 DU's
Multi-Family	10 permits = 208 DU's	2 permits = 12 DU's	0 permits = 0 DU's
<b>TOTALS</b>	<b>76 permits = 283 DU's</b>	<b>19 permits = 30 DU's</b>	<b>8 permits = 8 DU's</b>



## **Historic Neighborhoods Offer a Unique Living Experience**



# Neighborhood Preservation



**843 Bluff (Before and After)**



**426 Wisconsin (Before and After)**

# Neighborhood Development Initiative Program Infrastructure Improvements



# New Residential Development Continues at a Reduced Pace

- ***Deerfield Subdivision*** (Single Family)
  - 3 permits
- ***Kadlec Condominiums***
  - 1 (6-unit) building completed



## Residential Development- Cont.

- *Walnut Grove*
  - 1 Single Family home constructed
- *Eagles Ridge*
  - 2 Single Family homes constructed







**City Center  
Development Leads the  
Urban Renaissance**

# Bushel & Peck's Local Market



- Renovated former Woolworth's building
- 7 new jobs
- Capital Investment: \$340,000

# Ace Hardware Opens Downtown

- 12,000 square feet
- Capital Investment: \$1,000,000



# Walgreens



Broad Street

Madison Road

## Two newly built stores

- Total Square Feet: 28,800
- Capital Investment: \$9,000,000
- New jobs created: 35





**Beloit College Center for the Sciences**  
**106,000 square feet**  
**\$36,500,000 investment**

# Despite Challenging Economic Times, the City Looks Forward to 2009

- Beloit International Film Festival will again be held in the City from February 19-22, 2009, with numerous venues showing all types of productions
- The new Library will be open for patronage in the spring of 2009
- Kerry Corporate Campus should be fully occupied by mid-year
- New Hampton Inn ready for occupancy later in 2009 (?)
- Hydroblend to occupy their second building and be fully operational by Summer, 2009
- South Riverside Park improvements and Turtle Island reconstruction scheduled for dedication in early summer
- Gateway Boulevard extension to I-43 to begin by early summer
- The Capital Improvements Budget includes a significant number of street and utility improvements scheduled for construction in 2009

## Despite high hopes, 2009 begins with bad news

- Alcoa Inc. announces it will be closing the Beloit wheel plant in June
  - Approximately 250 jobs lost
- Cub Foods store announced it will be closing the local store in mid-march.
  - Approximately 71 jobs lost
- Department of the Interior denies casino application
  - Not the “last word”

**Questions  
or  
Comments**



**Thank you!**

---