



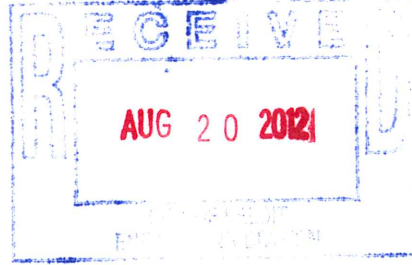
# Wisconsin Department of Transportation

2101 Wright Street Madison, WI 53704-2583 (608) 246-3800 FAX (608) 246-7996 [www.dot.wisconsin.gov](http://www.dot.wisconsin.gov)



August 14, 2012

CITY OF БЕЛОIT  
100 STATE ST  
BELOIT, WI 53511



**Subject: I-39/90 South Segment Public Information Meeting  
I-39/90, Illinois state line to County O  
Rock County**

The Wisconsin Department of Transportation (WisDOT) has scheduled a public information meeting to present information and gather public comments for the reconstruction and expansion of I-39/90 from the Wisconsin/Illinois state line to County O in Rock County. **The meeting is scheduled from 5p.m. to 7p.m. on Tuesday, August 28, 2012 at the Turtle Town Hall, located at 6916 S. County Road J, Beloit, WI 53511.** The meeting will be an open house format with a brief presentation at 5:30 p.m.

The meeting will present preliminary design information for planned improvements, which includes the complete reconstruction and expansion to six (6) and eight (8) lanes of the interstate highway from the state line to County O and the reconstruction of the three (3) interchanges at I-43/WIS 81, County S (Shopiere Road), and WIS 11 (Avalon Road). Improvements will also include the replacement of aging overpass structures along the corridor. Strip right of way acquisition for properties adjacent to the Interstate, interchanges, and local road overpasses are anticipated. The South Segment improvements from the state line to County O are part of the I-39/90 corridor improvements from the state line to the US 12/18 interchange near Madison.

You are encouraged to attend the meeting, provide input, and ask questions concerning this improvement. Maps showing the proposed improvement alternatives will be on display. WisDOT representatives will be available to discuss the project on an individual basis.

If you are unable to attend the meeting, or would like more information, contact Steve Marshall at (608) 246-5350. Written comments regarding the project can be mailed to Steve Marshall, WisDOT Southwest Region, 2101 Wright Street, Madison, WI 53704, or by email at [steve.marshall@dot.wi.gov](mailto:steve.marshall@dot.wi.gov). Citizens who are hearing-impaired and require an interpreter may request one by contacting Steve Marshall at least three working days prior to the meeting via the Wisconsin Telecommunications Relay System (dial 711).

Visit us online at [www.i39-90.wi.gov](http://www.i39-90.wi.gov) or Like us on Facebook at [www.facebook.com/WisconsinI3990Project](http://www.facebook.com/WisconsinI3990Project).

Yours sincerely,

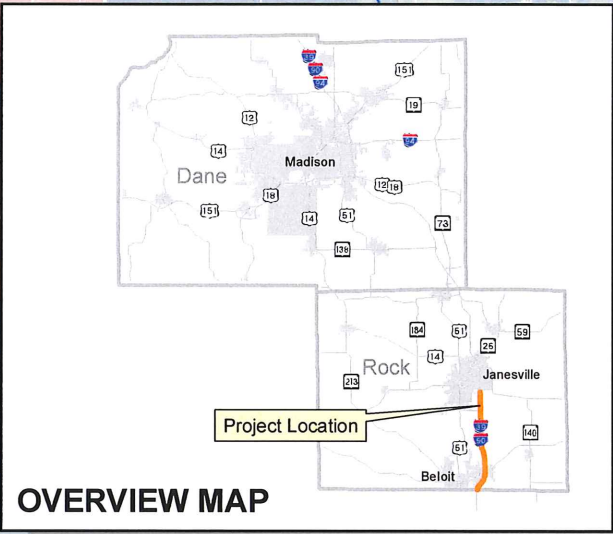
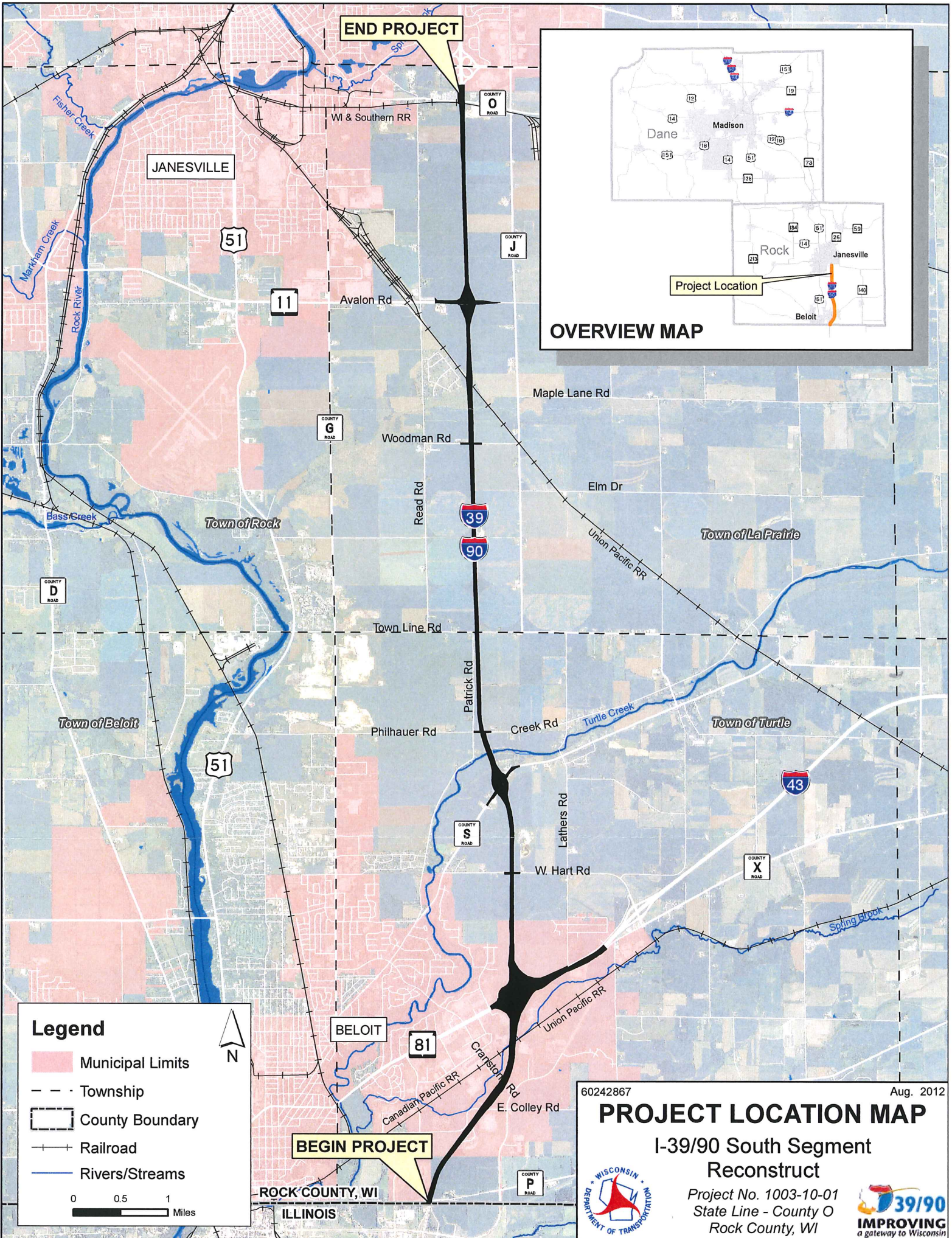
*Steve Marshall*

Steve Marshall  
I-39/90 WisDOT South Segment Project Manager

Enclosures: Project Location Map

c/enc: Mike Preboske, AECOM South Segment Project Manager



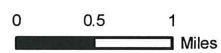


**END PROJECT**

**BEGIN PROJECT**

**Legend**

- Municipal Limits
- Township
- County Boundary
- Railroad
- Rivers/Streams



60242867

Aug. 2012

**PROJECT LOCATION MAP**

**I-39/90 South Segment Reconstruct**

Project No. 1003-10-01  
 State Line - County O  
 Rock County, WI

