
COMMUNITY DEVELOPMENT DEPARTMENT

NOTICE TO THE PUBLIC

September 19, 2018

To Whom It May Concern:

Toubl Contracting Inc. has filed an application for a Conditional Use Permit to allow a drive-in use (pick-up window) in the CBD-2, Central Business District-Fringe, for the properties located at:

802, 810, & 816 Fourth Street.

The applicant intends to remodel the existing Pizza Hut restaurant located at 802 Fourth Street, and has proposed numerous site improvements including a pick-up window as shown on the attached site plan. This project also involves elimination of the front parking area between the building and Fourth Street and the construction of a new off-street parking lot on the adjacent parcels as shown on the site plan.

The following public hearings will be held regarding this application:

City Plan Commission: Wednesday, October 3, 2018, at 7:00 PM, or as soon thereafter as the matter can be heard in The Forum, Beloit City Hall, 100 State Street.

City Council: Monday, October 15, 2018, at 7:00 PM, or as soon thereafter as the matter can be heard in The Forum, Beloit City Hall, 100 State Street.

THE PUBLIC IS INVITED TO ATTEND THESE HEARINGS.

We are interested in your opinion.

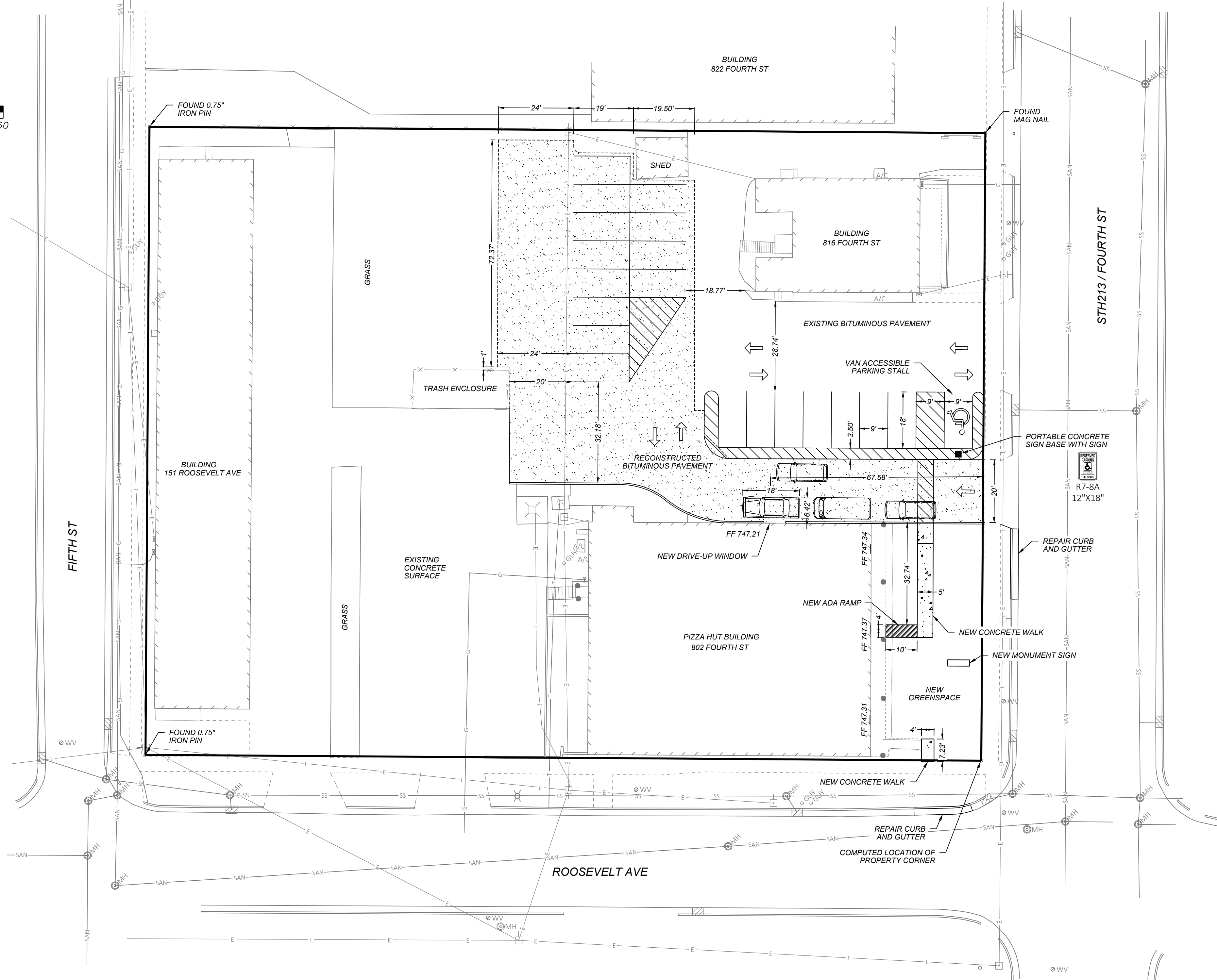
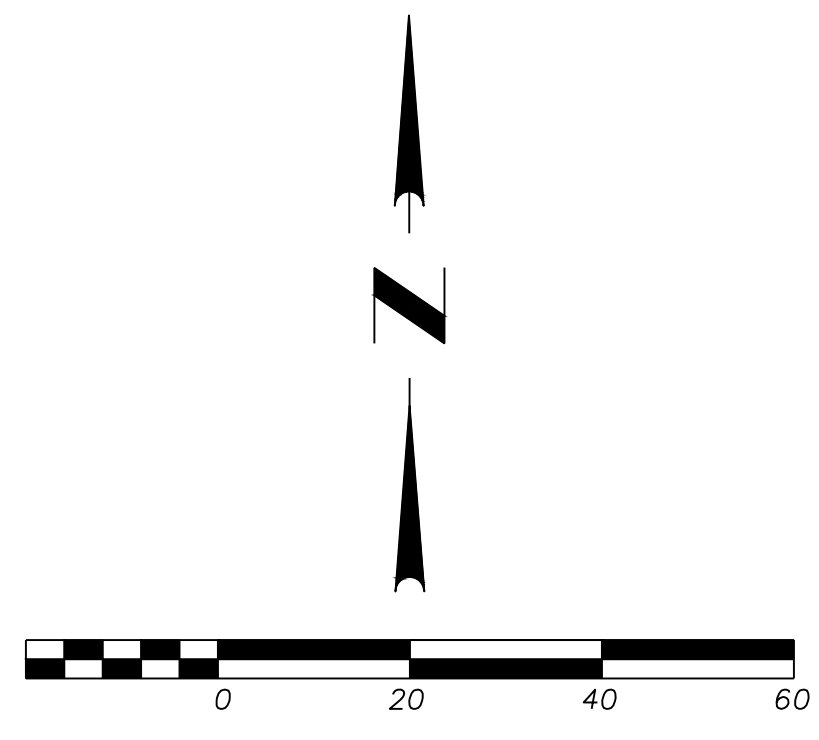
Anyone bringing handouts to the Plan Commission meeting must bring ten (10) copies and submit them to the Recording Secretary before the meeting begins. Staff is unable to leave the meeting area to make copies.

For additional information, please contact Drew Pennington, AICP in the Planning & Building Services Division at (608) 364-6711 or penningtond@beloitwi.gov. Comments will be accepted via telephone, email, and U.S. Mail.

Member
One Call System International

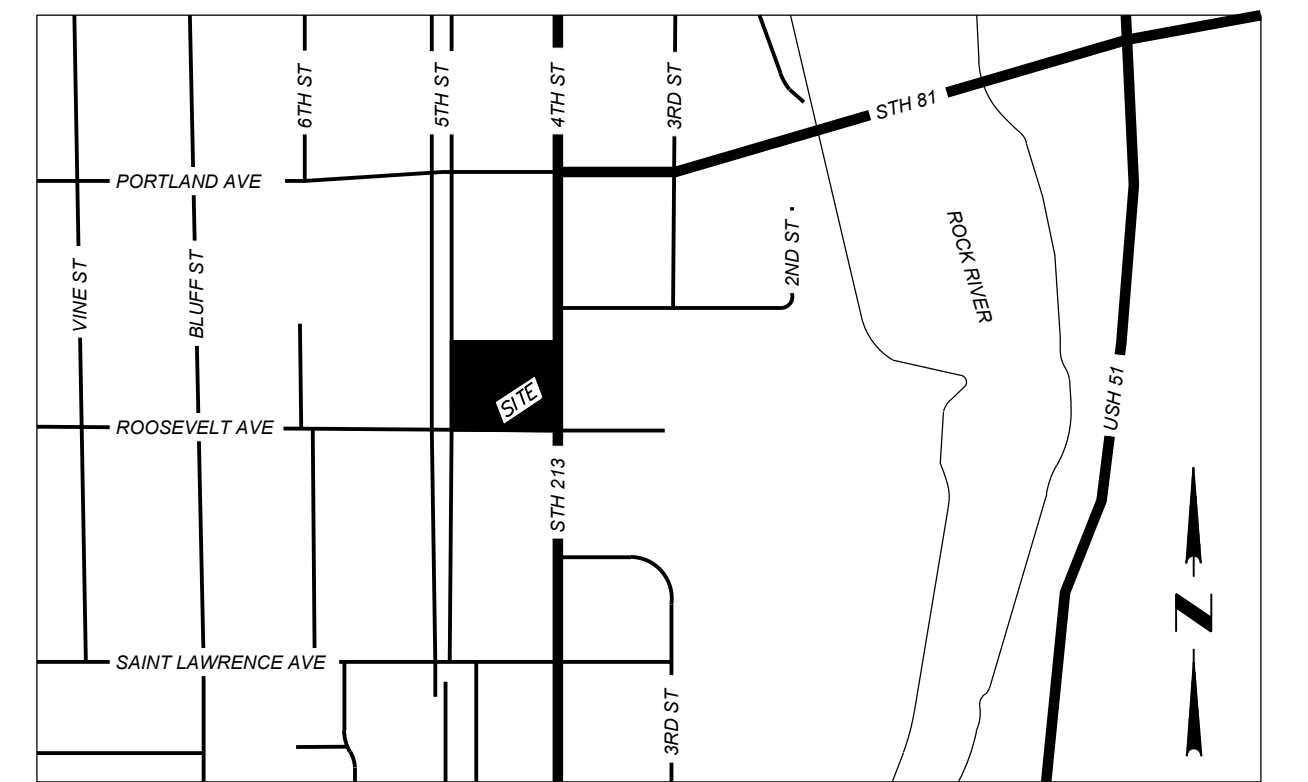
To Obtain Location of Participants Underground Facilities Before You Dig in Wisconsin
CALL DIGGERS HOTLINE
1-800-242-8511

Wis Statute 182.0175 (1974)
Requires Min. 3 Work Days Notice Before You Excavate



LEGEND

- BUILDING COLUMN
- MH MANHOLE
- ▣ CURB INLET
- A/C AIR CONDITIONING UNIT
- ⊕ SIGN
- ⊕ LIGHT POLE
- ⊕ POWER POLE
- GUY GUY CABLE
- ⊕ WV WATER VALVE
- ⊕ UTM UTILITY METER
- ⊕ UPD UTILITY PEDESTAL
- ⊕ TR TRANSFORMER
- 746.81 SPOT ELEVATION
- CONTOUR LINE
- PROPERTY LINE
- LOT LINE
- ROOF OVERHANG OR RIDGE
- SIDEWALK
- BUILDING LINE
- PORCH
- STEP
- SS STORM SEWER
- SAN SANITARY SEWER
- E ELECTRIC LINE
- G GAS LINE
- FENCE
- ⊕ INLET PROTECTION
- FF 747.21 FINISHED FLOOR ELEVATION



SITE DIMENSION PLAN
FOR
JAGGER BAY PROPERTIES
PIZZA HUT PARKING RECONSTRUCTION
PART OF SECTION 35, T.1N., R.12E. OF THE 4TH P.M.,
CITY OF BELOIT, WISCONSIN.

Combs & Associates	• LAND SURVEYING	DATE	09/10/18	REVISIONS
	• LAND PLANNING	BY	KMK	
	• CIVIL ENGINEERING	APPROVED	AFG	
	109 W. MILWAUKEE ST JANESVILLE, WI 53548 www.combsurvey.com	tel: 608-752-0575 fax: 608-752-0534	PROJECT NO.	118-413