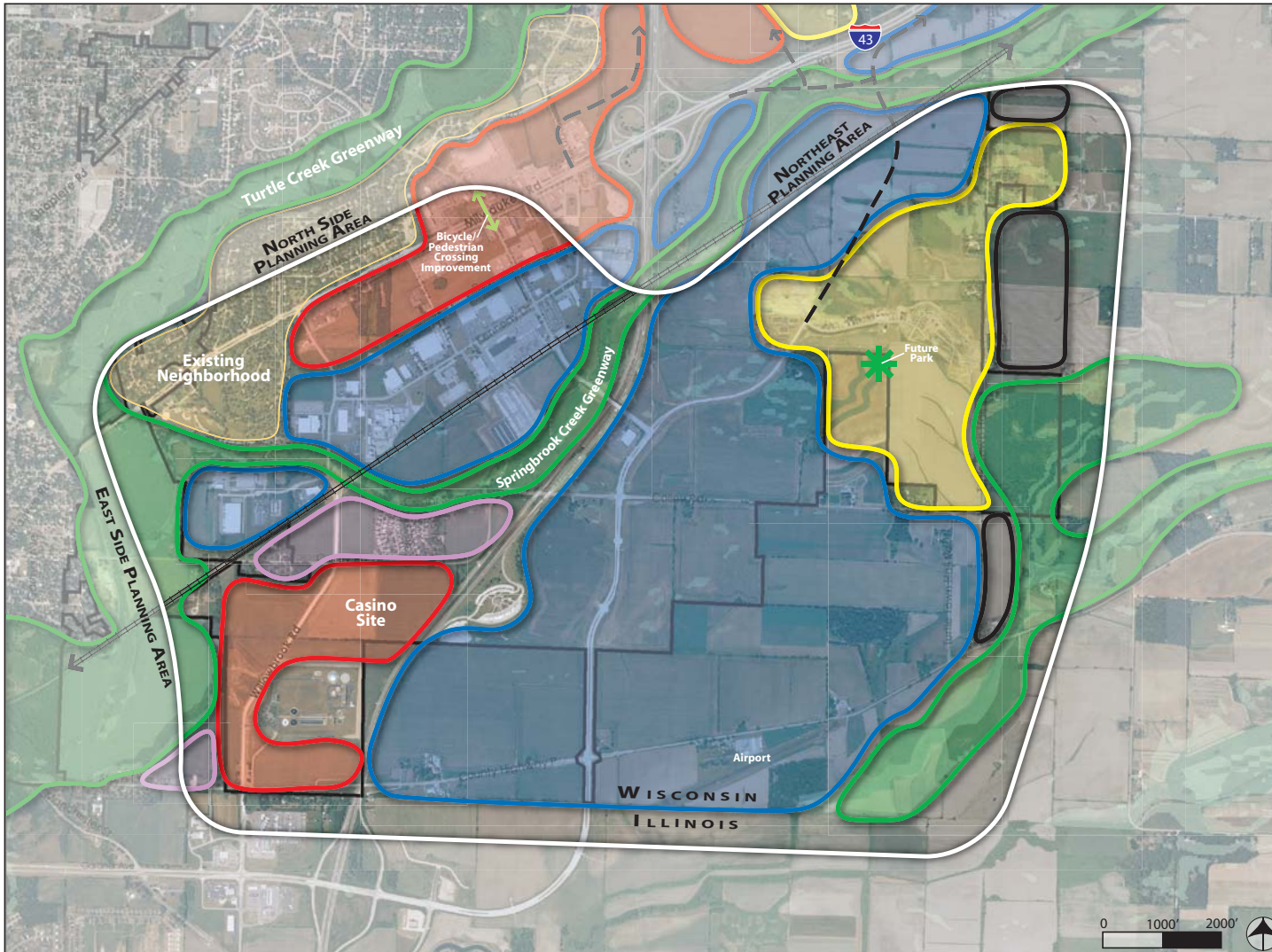


Map 5a:

MILWAUKEE ROAD/GATEWAY PLANNING AREA



Opportunities

- Regional commercial focused near interchanges
- Continue development of the Gateway Business Park as premiere regional industrial location
- New housing in area creates workforce and live-work neighborhood
- Railfront sites reserved for future rail industries
- Springbrook Creek Greenway preservation provides character and attractive office sites
- Careful transitioning of land uses along Willowbrook Road

Conceptual Land Uses

-  Community Commercial
-  Neighborhood Commercial
-  Employment (Industrial & Office)
-  Mixed-Use
-  Neighborhood (Mix of single-family, multi-family & neighborhood services)
-  Green Corridors
-  Long Range Urban Growth Area
-  Potential Future Roads

Note: This map is not a Detailed Future Land Use Map or Future Transportation Map for zoning and other decision making. The purpose of this map is to show conceptual future growth options and facilitate public discussion.