



## September 2010

### Upcoming Events

- September 4th-6th Lagoon Paddle Boats and Concessions open 12:00 pm -7:00 pm Labor Day Weekend
- September 6th the Leisure Services Office will be closed for Labor Day
- September 7th Volleyball League information available
- September 10th Lagoon Paddle Boats and Concessions open 12:00 pm - 7:00 pm Music at Harry's
- September 10th Back To School Dance (Middle School)
- September 11th-12th Lagoon Paddle Boats and Concessions open 12:00 pm - 7:00 pm (*Last Weekend of the Season*)
- September 11th Heritage Run/Walk at Leeson Park
- September 13th classes begin for "Mindful Based Stress Reduction"
- September 17th-19th Under .500 Softball Tournament (ONLY \$100 by September 3rd, \$125 after 3rd)



- October 4th Dodgeball League information available
  - October 8th Volleyball League Deadline
  - October 15th First Public Skate at Edwards Ice Arena - [2010-2011 Edwards Ice Arena Brochure](#)
- Attached!*

### Back To School Dance

*Time to kick off the school year with your friends!*

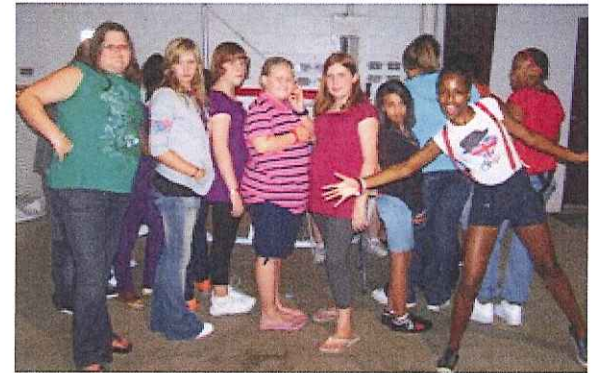
Join us Friday, September 10th at the Edwards Activity Center/Telfer Park on Cranston Road.

**Time:** 6:00 pm - 9:00 pm

**Location:** 2101 Cranston Road, Beloit

**Cost:** \$3.00 per student

**Ages:** Students currently enrolled in 6th, 7th or 8th grade



Music provided by "All About You" DJ, Concessions, Games, Prizes...and FUN!

### Adult Volleyball Leagues

Leagues will be forming after Labor Day!

Leisure Services offers the following leagues:

- Monday Coed (A, B, C and D)
- Tuesday Coed (A, B, C and D)
- Wednesday Women's (A, B, C and D)
- NEW** Thursday Coed (A, B, C and D)

*(A league is highly skilled competitive, B is competitive, C is fun and improving, D is strictly fun)*

All leagues play a 14 week regular season, followed by a seeded, single-elimination tournament. All games are played at Aldrich Middle School. Team Registration is open on a first come-first served basis to new and returning teams until Friday, October 8th. Team Fee is \$185.00 due at time of registration.

### Heritage Run/Walk

*The 2010 Heritage Run/Walk will be moving to Leeson Park due to construction at Riverside Park*

**Who:** Winners in each age group will receive medals (under 19, 20-29, 30-39, 40-49, 50-59, 60 and up) 12 different divisions total

**Where:** Leeson Park on Milwaukee Road (course maps are available at the Leisure Services Office)

**When:** Saturday, September 11th Check in 7:00 am - 7:55 am, 5K and 10K begin at 8:00 am, 5K Walk begins at 8:05 am

**Cost:** Register by September 8th for only \$20 or \$60 per team of 4! After September 8th registration fee will be \$25 per person or \$80 per team of 4. Fees help support the free summer playground program for youth 6-12



*For more information on any of the events in the September 2010 Newsletter, please feel free to contact the*

*Leisure Services Office at 608-364-2890 or stop in at 1003 Pleasant Street*

## PUBLIC SKATE SCHEDULE

Friday 7 -10:00 p.m. Oct 15-Mar 18

Saturday 2 - 4:00 pm Oct 16-Feb 12

Sunday 2 - 4:00 pm Oct 17-Feb 20

**\*No Public Skate on Sat & Sun 12/20 & 21; Sat  
2/19; Sat & Sun 2/27-28**

### PLEASE NOTE: NO SATURDAY OR SUNDAY PUBLIC SKATE IN MARCH CLOSURES:

November 25 - Thanksgiving

December 24 - Christmas Eve

December 25 - Christmas

December 31 - New Year's Eve

January 1 - New Year's Day

### Additional School Break Skating Dates: (2:00-3:30 p.m.)

Thursday	October 28
Friday	October 29
Wednesday	November 10
Wednesday	November 24
Friday	November 26
Wednesday	December 8
Monday	December 23
Tuesday	December 28
Wednesday	December 29
Wednesday	January 12
Monday	January 17
Friday	January 21
Wednesday	February 9
Friday	February 25
Wednesday	March 9

## BIRTHDAY PARTIES

Have your Birthday Party at the Ice Rink.

The package offers:

Admission and skate rental for up to 15 guests.

We will provide the party with:

2 large one topping pizza's

(you choose your topping)

2 liters of soda

Paper plates, napkins, cups, and forks.

The birthday room in the Mezzanine or Conference Room is available during Public Skate

hours:

Friday nights from 7-10, through March and

Saturday and Sundays 2 - 4:00Pm. through

February 13th.

Birthday Package - \$135.00

## INTRO TO ICE SKATING

This program is for kids that are looking to learn the basics of Ice Skating.

Program Dates/Times: Choose

Saturdays or Sundays from **2:00 - 3:00 p.m.**

**Session 1:**(Saturday Only) Oct 23rd, November 6th, 13th, 20th 27th and December 4th

**Session 2:**(Sunday only) October 24th, 31st, November 7th, 14th, 21st, and 28th

**Session 3:**(Saturdays Only) January 8th, 15th, 22nd, 19th, February 5th, and 12th

**Session 4:**(Sundays Only) January 9th, 16th, 23rd, 29th, February 6th and 13th.

### **Program Fees:**

W/ REC Card: 65.00 (per 6 week session)

W/O REC Card: 70.00 (per 6 week session)

Rental Skates included if needed.

**Ages: 5 - 12**

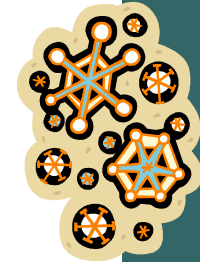
Questions or to Register please visit

City of Beloit Leisure Services

1003 Pleasant St.

608.364.2890

# 2010-2011 Edwards Ice Arena Schedule



City of Beloit Parks &  
Leisure Services Division

Edwards Ice Arena  
2101 Cranston Ave.  
Beloit, WI 53511

City of Beloit Leisure Services  
1003 Pleasant St.  
Beloit, WI 53511  
608.364.2890

## SPECIAL SKATES

### Halloween Skate



Friday, October 29, 7:00–10:00 p.m.

We'll be waiting to greet all scary monsters with games, candy, costume contests and music. Free skate rental to those in costume. Regular admission fees apply.

### Turkey Trot



Friday, November 19, 7:00-10:00 p.m. Come and celebrate

Thanksgiving on ice! Experience the Turkey Dance, join the games, music and excitement. Bring a non-perishable food item with you for free skate rental. Regular admission fees apply.

### Yuletide Glide



Friday, December 17, 7:00-10:00 p.m. Skate to Christmas carols.

Bring a nonperishable food item for free skate rental. Regular admission fees apply.

### Chills, Spills, and Thrills



Friday, January 28, 7:00-10:00 p.m.

As part of this year's Winterfest activities, come out and enjoy the winter wonderland with music. Regular admission and rental fees apply.

### Heartthrob Holiday



Friday, February 11, 7:00-10:00 p.m.

Bring your sweetheart for a whirl on the ice. Games, candy and music provided. 2-for-1 skate rental. Regular admission fees apply.

### Skatin' To The Oldies



Friday, March 18, 7:00-10:00 p.m.

Join in the retro craze! 60/70/80's costume contest and prizes, games and music. Free skate rental for costumes. Regular admission fees apply.



### 2010-2011 Prices w/ REC Card

Youth (17 and Under)	<b>\$4.50</b>
Adult	<b>\$5.00</b>
Family (of 4)	<b>\$12.00</b>
Youth Season Pass	<b>\$32.00</b>
Adult Season Pass	<b>\$37.00</b>
Family Season Pass (OF 4)	<b>\$80.00</b>
Skate Rental	<b>\$4.00</b>

### Without REC Card

Youth (17 and Under)	<b>\$5.00</b>
Adult	<b>\$6.00</b>
Family (of 4)	<b>\$17.00</b>
Youth Season Pass	<b>\$37.00</b>
Adult Season Pass	<b>\$43.00</b>
Family Season Pass (OF 4)	<b>\$90.00</b>
REC Card	<b>\$6.00</b>
REC Cards (Family of 4)	<b>\$20.00</b>

If you are a City of Beloit resident:

Purchase your REC Card in order to get resident rates on daily admission fees for the ice arena. The cost is \$6.00 each or \$20.00 for a family of 4, over 4 add \$6.00 each. You can purchase your REC Card at the City of Beloit Leisure Services Office Monday through Friday from 8:30 a.m.-12:30 p.m. and 2:00 p.m.-4:30 p.m.. Season passes are also available for purchase at this time. Please bring your drivers license, State ID, or utility bill. REC Cards can be renewed at no charge each year as long as you have the card. It is also good for resident rates at the Krueger Pool (in season).