



## **NOTICE TO THE PUBLIC**

January 23, 2013

To Whom It May Concern:

Andrew Janke, on behalf of the Beloit Economic Development Corporation, has submitted an application requesting the following amendments to the Future Land Use Map (Map 10) of the City of Beloit Comprehensive Plan:

1. 1500 Gateway Boulevard – From Mixed Use Residential to Business Park
2. 1505 Gateway Boulevard – From Mixed Use Residential to Business Park

Information regarding the location, zoning, and land use of this property is available for public review in the Planning & Building Services Division on the third floor of City Hall, 100 State Street.

The following public meetings will be held regarding the proposed amendments:

**City Plan Commission:** Wednesday, February 6, 2013, at 7:00 PM, or as soon thereafter as the matter can be heard in The Forum, Beloit City Hall, 100 State Street.

**City Council (Public Hearing):** Monday, March 18, 2013, at 7:00 PM, or as soon thereafter as the matter can be heard in The Forum, Beloit City Hall, 100 State Street.

**THE PUBLIC IS INVITED TO ATTEND THESE MEETINGS.**

**We are interested in your opinion.**

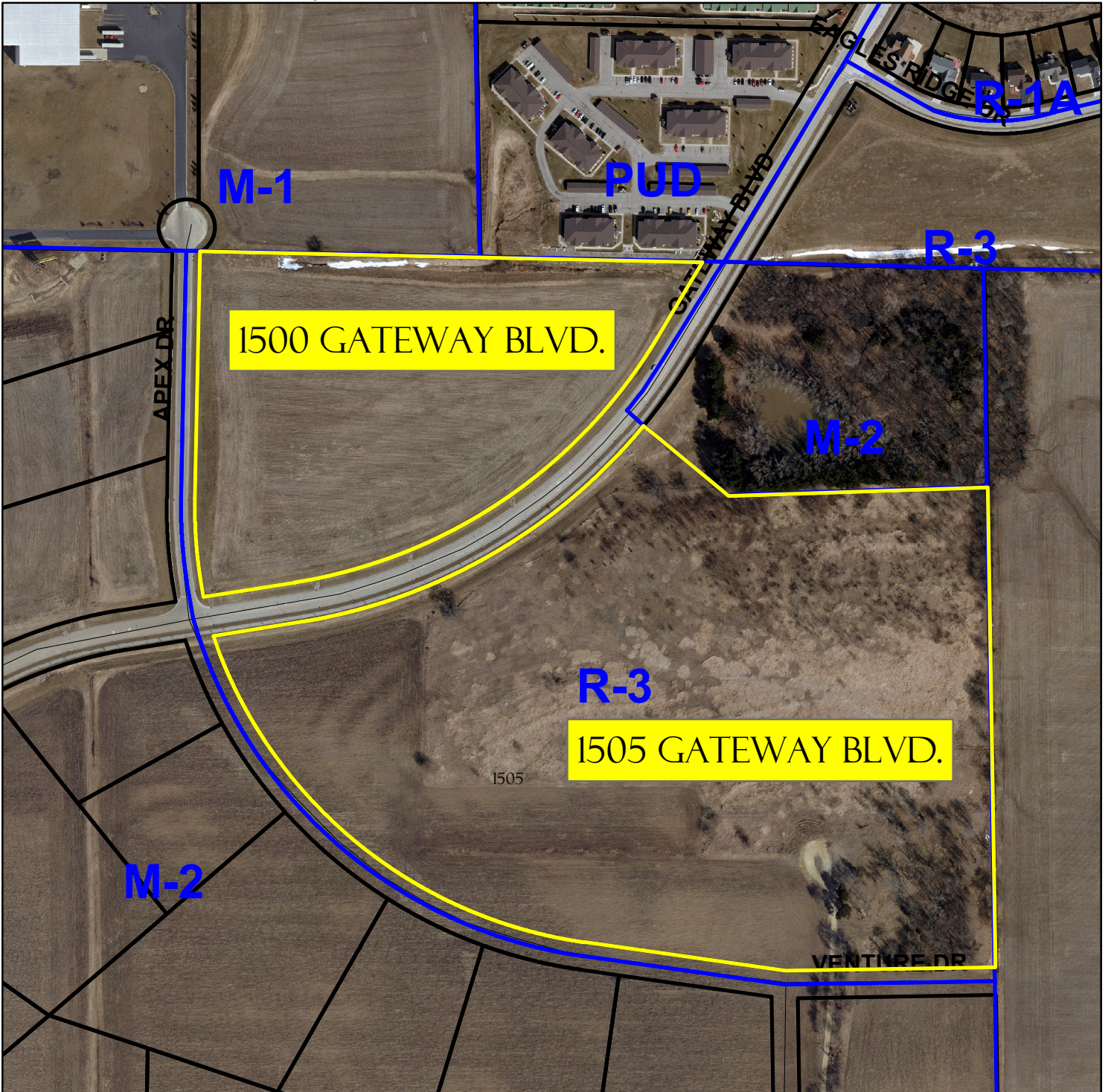
Anyone bringing handouts to the Plan Commission meeting must bring ten (10) copies and submit them to the Recording Secretary before the meeting begins. Staff is unable to leave the meeting area to make copies.

***For additional information, please contact Michael Lofton in the Planning & Building Services Division at (608) 364-6708 or [loftonm@ci.beloit.wi.us](mailto:loftonm@ci.beloit.wi.us). Comments will be accepted via telephone, email, and U.S. Mail.***

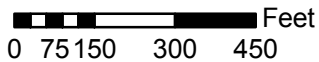
# Location & Zoning Map

1500 & 1505 Gateway Blvd.

RPB-2013-04



1 inch = 358 feet



## Legend

- Zoning District
- Parcels

Map prepared by: Michael D. Lofton II  
Date: January 2013  
For: City of Beloit, Planning & Building Services  
Date of Aerial Photography: April 2011

# PLANNING & BUILDING SERVICES DIVISION