



**MEETING NOTICE AND AGENDA  
Traffic Review Committee  
October 26, 2015 1:30 P.M.  
City Manager's Conference Room (4<sup>th</sup> Floor)  
Beloit, WI 53511**

1. Roll Call.
2. Introduction of new citizen members (Thomas Nee and Robert Norder)
3. Approval of the minutes from the July 27, 2015 Traffic Review Committee meeting.
4. Public Participation.
5. Discussion of traffic concerns along Milwaukee Road.
6. Request to install Autistic Child signs in 1500 block of Forest Avenue.
7. Discussion of traffic concerns near Porter Avenue.
8. Committee Member participation.
9. Next meeting –The next meeting is scheduled for **November 23, 2015**.
10. Adjournment

\*\* Please note that, upon reasonable notice, at least 24 hours in advance, efforts will be made to accommodate the needs of disabled individuals through appropriate aids and services. For additional information or to request this service, please contact the City Clerk's Office at 364-6680, 100 State Street, Beloit, WI 53511.



**MINUTES**  
**TRAFFIC REVIEW COMMITTEE**  
**July 27, 2015, 1:30 p.m.**  
**City Manager's Conference Room**

The regular meeting of the Traffic Review Committee of the City of Beloit, WI was held April 27, 2015 at 1:30 p.m. in the City Manager's Conference Room. G. Boysen called the meeting to order at 1:31 p.m.

**1. Roll Call.**

Members present: (Voting) M. Ramsden, C. Fryar, M. Flesch, D. Molland.

Members absent: (Voting) None.

Non-voting members present: G. Boysen

Staff: C. Gill, J. Dupuis.

Public: S. El-Amin, J. Marotz, V. Jentoft-Johnson

**2. Approval of the minutes from the October 27, 2014 Traffic Review Committee meeting.**

Minutes of the April 27, 2014 meeting were approved on a motion by M. Flesch, second by M. Ramsden. Motion carried.

**3. Public Participation.**

None.

**4. Ordinance to allow parking on Kennedy Drive**

J. Dupuis gave the staff report.

Staff recommendation is to keep the No-Parking designation for Kennedy Drive between Lee Lane and Cranston Road. There was a motion by C. Fryar, second by D. Molland to approve staff recommendation. Motion passed.

**5. Ordinance to change parking time limits in the Broad Street parking lot ('Unlimited parking' from 2-Hour time limit).**

J. Dupuis gave the staff report.

Staff recommendation is to keep the current time limits in the Broad Street parking lot at this time and review the need for change based on the results/recommendations of the upcoming Downtown parking study. There was a motion by M. Flesch, second by C. Fryar to approve staff recommendation. Motion passed.

**6. Discussion of traffic concerns near Todd School.**

J. Dupuis gave the staff report.

Discussion regarding the current conditions and potential changes were outlined. Changes included opening driveways to allow for additional turning movements, increased notification from School District to parents and increased staff commitments from School District. Police also talked about possibility of increased presence during pick-up/drop-off times. School District indicated they are working on traffic safety brochures for school sites.

**7. Committee Member Participation**

M. Ramsden mentioned that the traffic signals at Park/White have not been working efficiently since construction has been completed.

**8. The next meeting is scheduled for August 24, 2015.**

The next meeting of the Traffic Review Committee is scheduled for August 24, 2015.

**9. Adjournment.**

Motion to adjourn was made by M. Ramsden, second by D. Molland, at 2:27 p.m. Motion passed.

Minutes by Jason Dupuis  
Transportation Engineer

# CITY OF BELOIT

## REPORTS AND PRESENTATIONS TO TRAFFIC REVIEW COMMITTEE

---

Action Required \*  Information Only  Options Attached

**Date:** October 26, 2015  
**Presenter(s):** Jason Dupuis  
**Departments(s):** Public Works-Engineering

---

**Topic / Purpose for Presentation:**

Discussion of traffic concerns along Milwaukee Road.

---

**Background Information:**

The City of Beloit has received inquiries from various sources related to the traffic along Milwaukee Road near Fran Fruzen Intermediate School.

---

**Key Issues (maximum of 5):**

1. Engineering Staff has been working with the School District and Police Department to address traffic concerns along Milwaukee Road.
  2. The School District has distributed safety brochures, implemented an adult crossing guard at Lee Lane, posted a school official near the intersection of Lee Lane to assist with pedestrian crossing, and utilized school staff to help direct the flow of traffic near the school site. In addition the School District agreed to cost share two radar signs along Milwaukee Road to help remind drivers of their speed.
  3. The Police Department in coordination with the School posts a school resource officer near the entrance/exit along Milwaukee Road during pick-up/drop-off times. Also, the Police Department has increased patrols and enforcement along Milwaukee Road.
  4. Engineering Staff has posted school crosswalk signage at Lee Lane, increased the walk time allowed at Lee Lane painted slow/school markings on the pavement and installed directional signage near the SW corner of the school property adjacent to the church property.
  5. In addition Engineering Staff has been gathering data related to pedestrian movements, vehicle counts, turning movements, speed data, etc. and has hired a traffic engineering consultant to perform a traffic needs assessment for this corridor.
- 

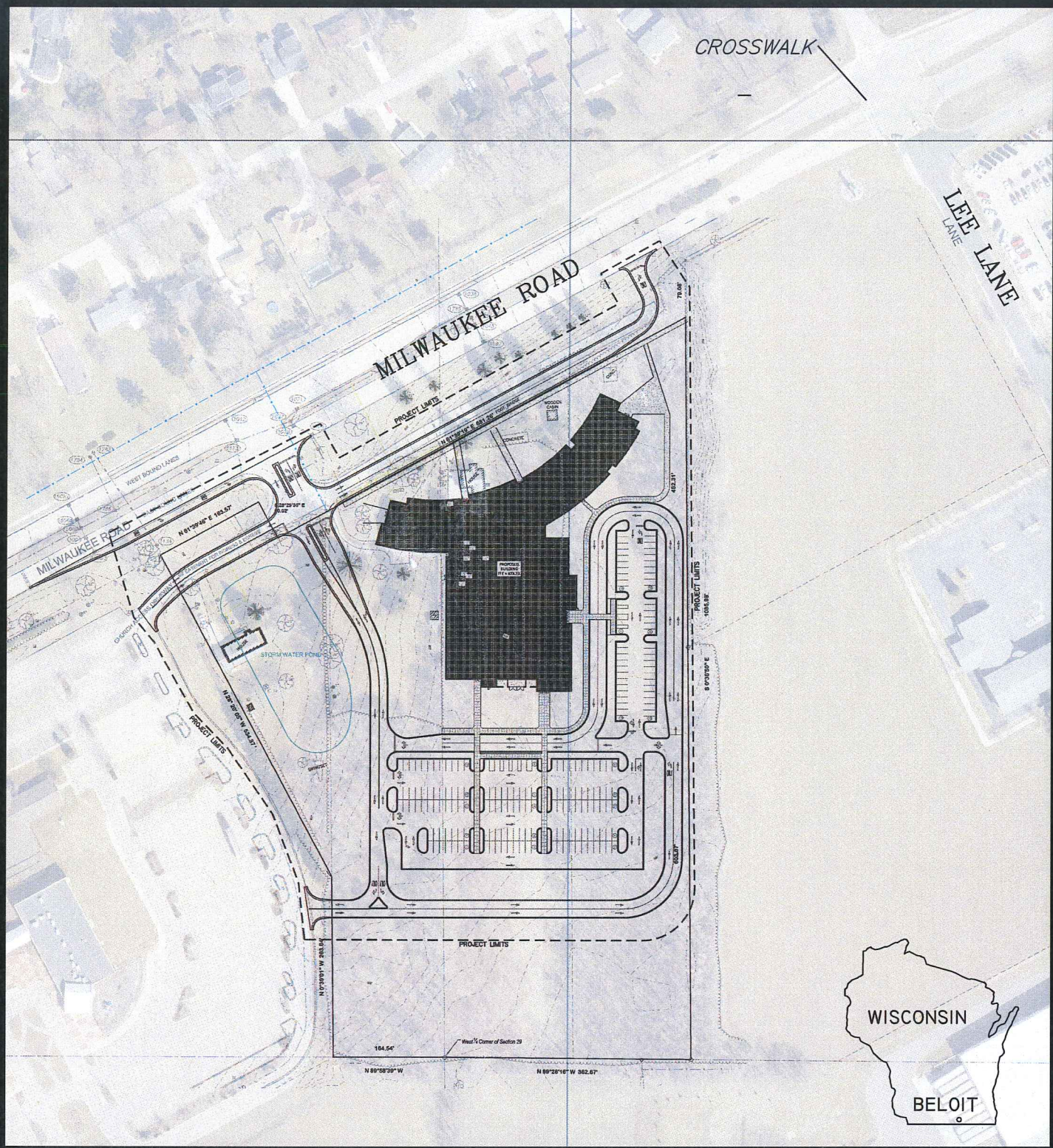
**Action Required / Recommendation / Evaluation:**

Discussion only (results of needs assessment, if available).

---

**Fiscal Note:**

---



# FRUZEN SCHOOL



LOCATION: Milwaukee Road

CITY OF BELOIT, WISCONSIN

SCALE: NONE

DRAWN BY: JRD (2015)



# FRUZEN SCHOOL



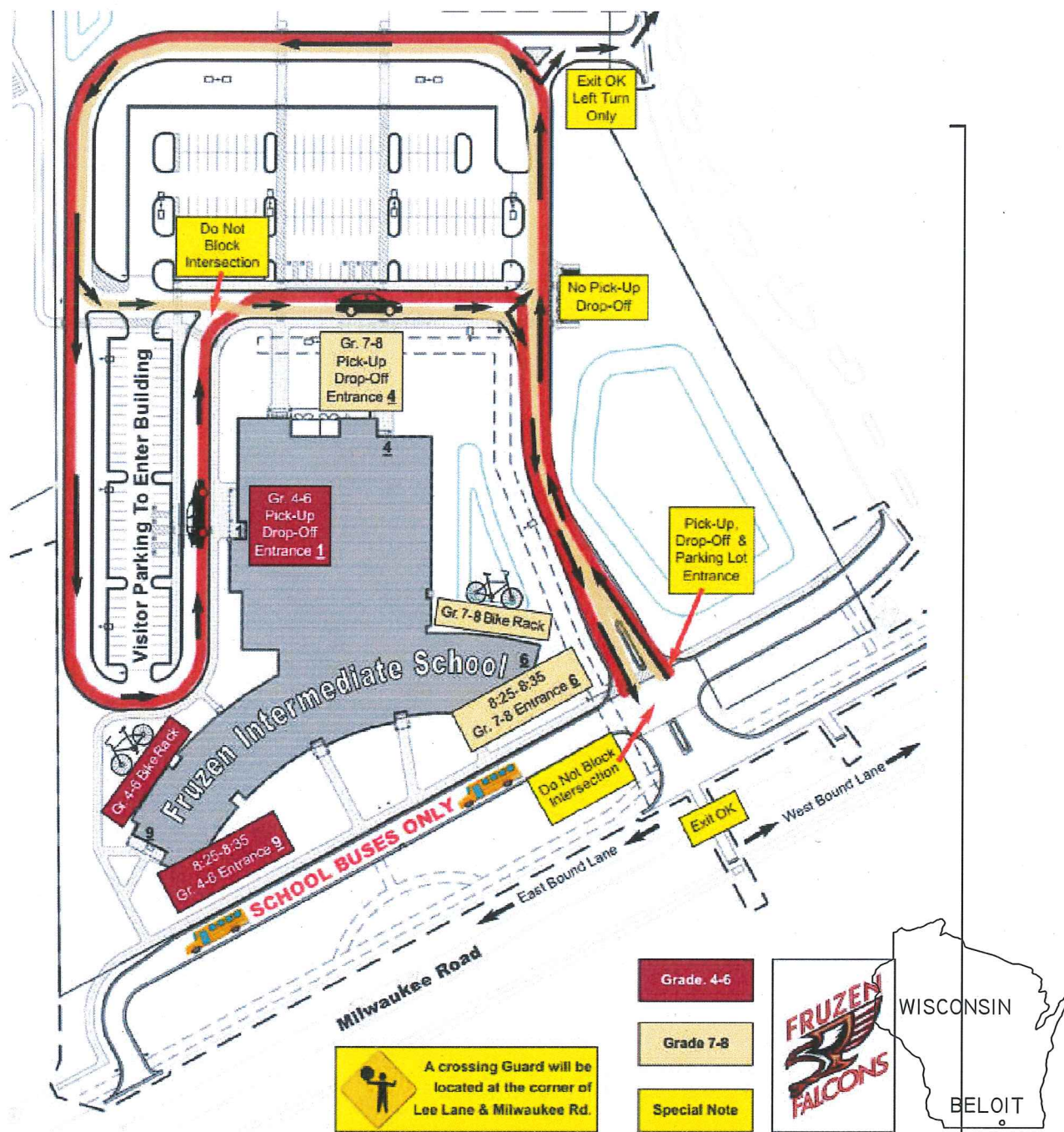
LOCATION: Milwaukee Road

CITY OF BELOIT, WISCONSIN

SCALE: NONE

DRAWN BY: JRD (2015)

This map shows the routes for dropping off and picking up students, whether students are riding the bus, walking, riding their bikes or being dropped off by car. [Click here to view procedures and map.](#)



## FRUZEN SCHOOL



LOCATION: Milwaukee Road

CITY OF БЕЛОIT, WISCONSIN

SCALE: NONE

DRAWN BY: JRD (2015)

## Fruzen Intermediate School Drop-Off and Pick-Up Traffic Flow Procedures

Getting your student(s) to and from school safely is very important. Please read the procedures below, and reference the map for further details on entrances and traffic flow. Your cooperation on these procedures and following the traffic flow will ensure the safety of the students and provide for a better and more efficient flow of traffic.

### **Students arriving before 8:25am**

Students in grades 4-6 will enter through the main entrance doors (Entrance #1) and go to the cafeteria. Students in grades 7-8 will enter left of the loading dock (Entrance #4) as you are looking at the building from the parking lot. There will be signs outside the entrances, along with staff welcoming and guiding Students to the correct entrance. Boys and Girls Club will be providing supervision and activities for students in grades 4-8 before school from 7:15am-8:25am. At 8:25am, students will be allowed to go to their lockers and enter their advisory classes where they will be given breakfast.

### **Students riding the bus**

Students riding the Durham bus will be dropped off at 8:25am in the "bus only" lane. Students then will enter either the 4-6 entrance (Entrance #9) on the northeast end of the building or the northwest end of the building for students in grade 7-8 (Entrance #6). Signage will be out there, along with staff assisting and welcoming students safely to the correct entrance.

The students riding the city bus will be dropped off at the Morgan bus stop. Students will then use the crosswalk at the stoplights at the intersection of Lee Lane and Milwaukee Road. Students will be assisted by an adult crossing guard both before and after school at that crosswalk.

### **Bike riders and Walkers**

Students that are riding their bikes and walking to school should use the crosswalk at the stoplights at the intersection of Lee Lane and Milwaukee Road. Students will be assisted by an adult crossing guard both before

and after school at that crosswalk. In addition, the City of Beloit will be adding bright signage with advanced warning for the crosswalk. The City will also install a new crosswalk this fall for that intersection, which will further enhance visibility. Once across Milwaukee Road, there is a sidewalk in front of the UW Cancer Center all the way to Fruzen.

Students arriving before 8:25am will enter following the directions listed above. Students arriving between 8:25am-8:35am will enter using their grade specific bus entrances.

### **Car Drop-Off and Pick-Up**

Students in grades 4-6 will be dropped off and picked up near the main entrance, and will then enter through the main entrance (Entrance #1). There will be signage for the drop-off and pick-up location. Staff will be there to welcome students and direct them to the correct entrance. Please pull all the way up so more cars are able to pull in and drop their child off. Then follow the arrows out of the parking lot, and you may either exit the parking lot onto Milwaukee Road, or turn and take the outside lane of the Central Christian Church parking lot to get to Willowbrook Road. There are arrows on maps to clarify the drop-off locations and the traffic flow when dropping off and picking up your child.

Students in grades 7-8 will be dropped off and picked up near the loading dock (Entrance #4). Staff will be there to welcome and direct students to the correct entrance. Please pull all the way up so more cars are able to pull in and drop their child off. Then follow the arrows out of the parking lot, and you may either exit the parking lot onto Milwaukee Road, or turn and take the outside lane of the Central Christian Church parking lot to get to Willowbrook Road. There are arrows on maps to clarify the drop-off locations and the traffic flow when dropping off and picking up your child.

If you have child in grades 4-6 and 7-8, please follow the procedures above. First drop off the child in grades 4-6, and then your child in grades 7-8.

# FRUZEN

INTERMEDIATE SCHOOL



2600 Milwaukee Road  
Beloit, Wisconsin 53511  
608-361-2000  
[www.sdb.k12.wi.us](http://www.sdb.k12.wi.us)

## Drop-Off and Pick-Up Traffic Flow Procedures



# CITY OF BELOIT

## REPORTS AND PRESENTATIONS TO TRAFFIC REVIEW COMMITTEE

---

Action Required \*   X   Information Only        Options Attached

**Date:** October 26, 2015  
**Presenter(s):** Jason Dupuis  
**Departments(s):** Public Works-Engineering

---

**Topic / Purpose for Presentation:**

Request to install Autistic Child signs in the 1500 block of Forest Avenue.

---

**Background Information:**

The City of Beloit has received a request from Jason Sorenson of 1543 Forest Avenue to install Autistic Child signs in the 1500 block of Forest Avenue.

---

**Key Issues (maximum of 5):**

1. Mr. Sorenson indicated that he has a 5 year old autistic child and would like to have the City install Autistic Child signs along his block. Mr. Sorenson also indicated that he had spoken with Officer Dalton of the Police Department and that they are aware of the presence of an autistic child in this area.
  2. Similar signs (Deaf/Blind/Autistic/etc.) are not effective methods to alert drivers to an unusual situation and most state DOT's do not recommend installing the sign as it gives a false sense of security to the individual/family of the Deaf/Blind/Autistic person.
  3. In addition, these types of warning signs have shown to have little or no effect of driver habits in the areas of the signage. As a result, the current edition of the Manual on uniform Traffic control Devices, which the City uses as a guide when placing signs, no longer lists these types of signs.
  4. The Traffic Review Committee recommended in October of 2008, that the City no longer install these types of warning signs. In addition, the Committee recommended that the City no longer replace these types of signs, rather remove them completely after their useful life is complete.
  5. This area already includes No-Parking and school related signage for Gaston School.
- 

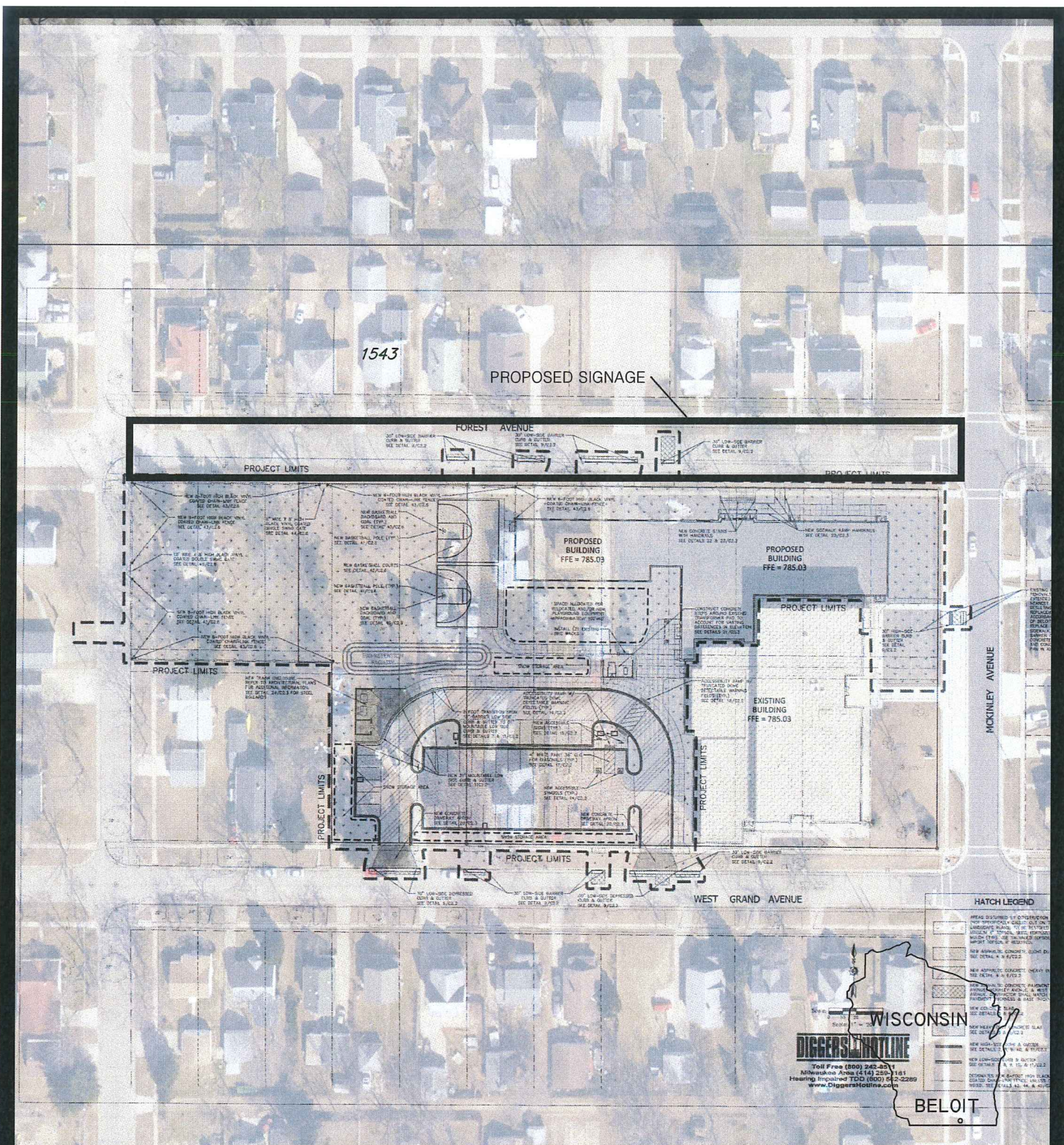
**Action Required / Recommendation / Evaluation:**

Staff recommendation is not install the Autistic Child signs in the 1500 block of Forest Avenue.

---

**Fiscal Note:**

---



# FOREST AVENUE



LOCATION: 1543 Forest Avenue

CITY OF BELOIT, WISCONSIN

SCALE: NONE

DRAWN BY: JRD (2015)

# CITY OF BELOIT

## REPORTS AND PRESENTATIONS TO TRAFFIC REVIEW COMMITTEE

---

Action Required \*  Information Only  Options Attached

**Date:** October 26, 2015  
**Presenter(s):** Jason Dupuis  
**Departments(s):** Public Works-Engineering

---

**Topic / Purpose for Presentation:**

Discussion of traffic concerns near Porter Avenue.

---

**Background Information:**

The City of Beloit received a request from Sheila De Forest to meet with Nora Navaroo regarding traffic concerns near Porter Avenue.

---

**Key Issues (maximum of 5):**

1. During a Porter Avenue Watch Group (PAWG) meeting, citizens brought up concerns related to speeding, wrong-way vehicles along Porter Avenue and additional one-way signage at Porter and Yates.
  2. I met with Nora Navaroo near Porter and Yates to discuss her concerns. While out in the field, I was introduced to John Ramstad of Community Action, Inc. Mr. Ramstad was interested in some of the same concerns that were previously brought up at the PAWG meeting.
  3. I walked with Ms. Navaroo along Porter Avenue and she had the following comments/requests:
    - Add additional Do Not Enter or One-Way south of Yates to prevent wrong way travel
    - Make the existing Do Not Enter signs more visible to prevent wrong way travel
    - Install a stop sign at Porter and Randall
    - Make Porter a One-Way street from Prairie to Henry
    - Make Harvey Street similar to Yates, Switchtrack, Hull, etc. (right turn only on Porter)
  4. The installation of additional signage and/or more visible signage is possible without any council action or new ordinances. The re-designation of streets to one-way, restriction of turning movements, additional stop signs, etc. are all items that would need committee recommendations and council action.
  5. One-way streets should be paired with parallel/adjacent One-way streets for travel in the opposite direction.
- 

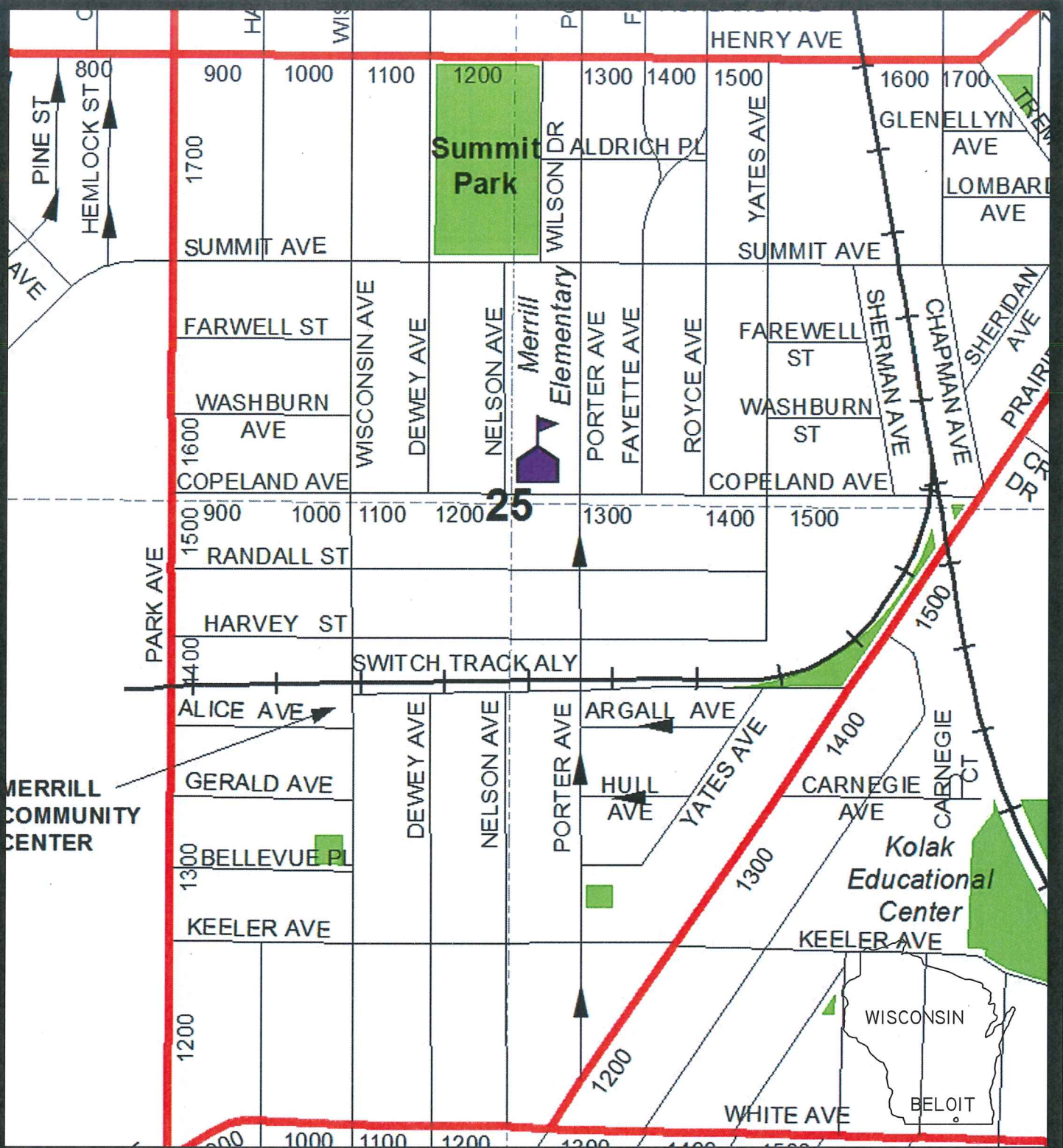
**Action Required / Recommendation / Evaluation:**

Discussion only.

---

**Fiscal Note:**

---



PORTER AVENUE AREA



LOCATION: Porter Avenue

CITY OF BELOIT, WISCONSIN

SCALE: NONE

DRAWN BY: JRD (2015)