



# Wisconsin Department of Transportation

111 Interstate Blvd., Edgerton WI 53534-9399 (608) 884-1234 FAX (608) 884-1220 [www.dot.wisconsin.gov](http://www.dot.wisconsin.gov)



July 18, 2014

«First\_Name\_1» «Last\_Name»  
«Company»  
«Address\_1»  
«Address\_2»  
«City» «State» «Zip\_Code»

**Subject: Public Involvement Meeting  
Project ID 1003-10-02  
Illinois state line to County O  
I-39/90 and I-43/WIS 81 Interchange  
Rock County**

The Wisconsin Department of Transportation (WisDOT) has scheduled a public involvement meeting to present information and gather public comments for the reconstruction of the I-39/90 and I-43/WIS 81 Interchange in Rock County. **The meeting is scheduled from 5 p.m. to 7 p.m. on Tuesday, August 5, 2014 in the Community Room of the Beloit Public Library, located at 605 Eclipse Boulevard, Beloit, WI 53511.** The meeting will be an open house format with a brief presentation at 5:30 p.m.

As part of the environmental process, the presentation will show the preferred interchange alternative. Exhibit details will include:

- An overview of the interchange depicting free flow Interstate to Interstate movements along with an extension of WIS 81 to the east;
- Intersection alternatives including stop signs, traffic signals, and roundabouts;
- Anticipated right of way needs for properties within the interchange footprint.

You are encouraged to attend the meeting, provide input, and ask questions regarding this project. WisDOT and design representatives from AECOM will be available to discuss the project.

If you are unable to attend the meeting and would like more information, contact project manager Steve Marshall at (608) 884-7134. Written comments regarding the project can be mailed to Steve Marshall, WisDOT Project Manager, 111 Interstate Blvd, Edgerton, WI 53534, or by email at [steve.marshall@dot.wi.gov](mailto:steve.marshall@dot.wi.gov). Citizens who are hearing-impaired and require an interpreter may request one by contacting Steve Marshall at least three working days prior to the meeting via the Wisconsin Telecommunications Relay System (dial 711).

Visit us online at [www.i39-90.wi.gov](http://www.i39-90.wi.gov) and follow us on Facebook at [www.facebook.com/WisconsinI3990Project](http://www.facebook.com/WisconsinI3990Project).

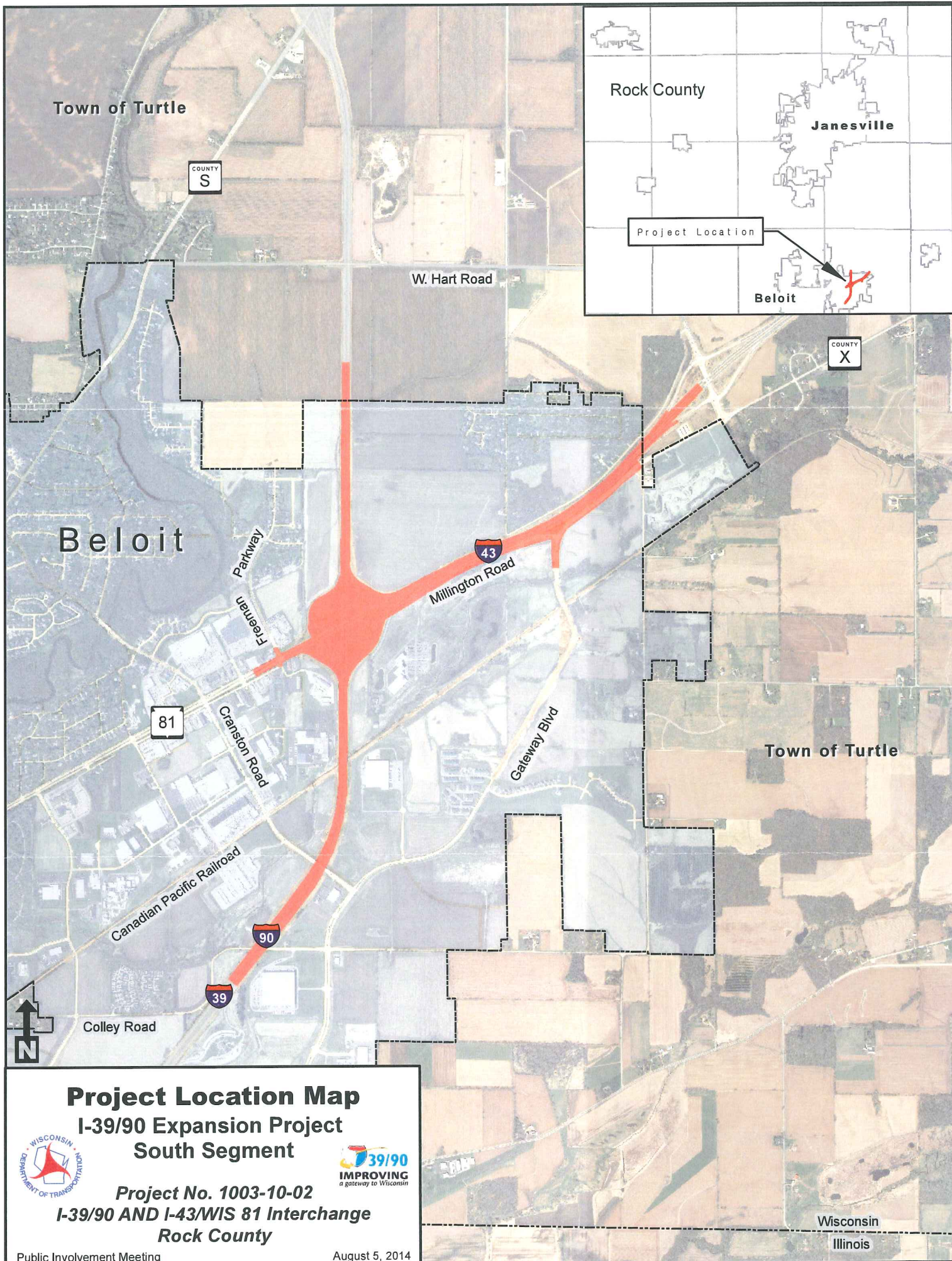
Yours sincerely,

*Steve Marshall*

Steve Marshall, P.E.  
I-39/90 WisDOT South Segment Project Manager

Enclosures: Project Location Map

c/enc: Mike Preboske, P.E., I-39/90 AECOM South Segment Project Manager



**Project Location Map**  
**I-39/90 Expansion Project**  
**South Segment**

**Project No. 1003-10-02**  
**I-39/90 AND I-43/WIS 81 Interchange**  
**Rock County**

