

# STATELINE AREA TRANSPORTATION STUDY

2400 Springbrook Court • Beloit, Wisconsin 53511

**TO:** SLATS Policy and Technical Committees

**FROM:** T.J. Nee, MPO Coordinator

**DATE:** March 31, 2014

**SUBJECT:** Summary of Agenda Items, April 14, 2014 SLATS Joint Policy/Technical Meeting

The following is a summary and staff report of the 3 resolutions for your review and consideration at the April 14, 2014 SLATS Joint Policy and Technical Advisory Committee meeting. If you have any questions, please contact me at neet@ci.beloit.wi.us or 608-364-6702.

**1) Agenda Item 4, Resolution 2014-1 amending the 2014 Transportation Improvement Program (TIP).**

The 2014 TIP was adopted October 28, 2014 by the SLATS Policy Committee. Since then, there have been a number of changes in funding availabilities and priorities that require a TIP Amendment. A summary of these changes are below. More detail can be found in the included resolution.

- A. Minor TIP numbering change for Henry Avenue resurfacing in the City of Beloit.
- B. Addition of 3 new State of Wisconsin projects (portion of US-51 resurfacing (Cranston Rd. to WI-11), U.S. 51 signal replacement at Co-Q, and Traffic OPS inclusion at various locations).
- C. Additional funding for 3 Rock County projects for additional rights-of-way acquisition, utility relocation and actual construction related to Co-G and Inman Parkway projects.
- D. Reprogramming Inman Parkway sidewalk from 2015 to 2016 in the Town of Beloit.
- E. Change City of South Beloit Wheeler Avenue Bike Path project to "Advanced Construction Status."

**2) Agenda Item 5, Resolution 2014-2 adopting the amended SLATS Adjusted Urbanized Area Boundary.**

Every ten years after the Census Bureau designates new Urbanized Areas (UA), Metropolitan Planning Organizations such as SLATS must adopt the new UA, adopt a new Adjusted Urbanized Area (AUA), and a new Metropolitan Planning Area (MPA). SLATS adopted the current UA, AUA and MPA on February 25, 2013. WisDOT approved the adjustments to the Wisconsin portion of the AUA in May of 2013 and FHWA-WI approved the adjustments to the Wisconsin portion of the AUA in February 2014.

IDOT has reviewed the adjustments and their approval is pending a revision to our AUA

boundary in the southeast corner of our planning area. Specifically, a small rural island was created within the SLATS MPA, but between the RMAP and SLATS AUAs. This area is bounded by our current AUA on the north, Roscoe Road on the south, Old River Road on the west and Sprague Road on the east (RMAP's AUA and MPA - See attached map). The area is largely agricultural but does include a number of residences (rural in nature) in the northern third of the area. Portions of this area are within the Village of Rockton and portions are in Rockton Township. IDOT has requested that we amend our AUA Boundary to include this island. This will create a contiguous AUA between SLATS and RMAP.

**3) Agenda Item 6, Resolution 2014-3 adopting changes to the South Beloit area functional classification system**

IDOT has proposed the following changes for system continuity and/or because of reduced Annual Average Daily Traffic (AADT) per FHWA guidelines. This does not affect funding availability for these roads. The changes are numbered on the attached map in your packet.

- A. **Prairie Hill Road/Manchester Road from Willow Brook Road to Boone County line – change from Minor Arterial to Major Collector**
- B. **Rockton Road from I-90 to White School Road (our planning area ends at Pleasant Valley Road) from Minor Arterial to Major Collector.**
- C. **IL 75 from urban limit to IL-2 from Other Arterial to Minor Arterial.**
- D. **Yale Bridge Road from Witter Road to South Bluff Road from Minor Arterial to Major Collector.**
- E. **Park Avenue from IL-75 to Eastern from Minor Arterial to Major Collector.**

While these reductions in Functional Class may be appropriate at this time and for the next 5 years, as additional growth and development occurs, further adjustments may be needed to increase the functional classification in the future. In the meantime, each locality may wish to consider appropriate land use and subdivision controls to control driveway access along such roads, so that when they do become more heavily traveled and are designated a higher functional classification, potential conflicts with having too many access points can be minimized.

## MEETING AGENDA

Joint Policy & Technical Advisory Committee Meetings  
Stateline Area Transportation Study  
Monday, April 14, 2014 at 10:00 A.M  
Rotary River Center, 1100 Riverside Drive (U.S.H. 51)  
Beloit, Wisconsin

1. Roll Call
2. Citizen Participation
3. Approval of the minutes of the October 28, 2013 Joint Policy and Technical Advisory Committee Meetings. *Action Required by Technical and Policy Committees*
4. Resolution 2014-1 amending the 2014 Transportation Improvement Program. *Action Required by Technical and Policy Committees*
5. Resolution 2014-2 adopting the amended SLATS Adjusted Urbanized Area Boundary. *Action Required by Technical and Policy Committees*
6. Resolution 2014-3 adopting changes to the South Beloit Area functional classification system. *Action Required by Technical and Policy Committees*
7. Technical Advisory Committee Agency Reports:

### Voting Members

City of Beloit Engineering  
Town of Beloit Engineering  
City of Beloit Public Works  
Beloit Transit System  
Federal Highway Administration-Illinois  
Federal Highway Administration-Wisconsin  
IDOT, District 2  
Rock County Planning, Economic & Community Development Agency  
Rock County Highway Division  
Village of Rockton Public Works  
City of South Beloit Engineering

Stateline Mass Transit District  
Town of Turtle Engineering  
Winnebago Highway Department  
Winnebago County Planning  
WisDOT Central Office  
WisDOT Southwest Region

Non-Voting Agencies

FTA Region V-Chicago  
IDOT Bureau of Urban Program Planning  
Janesville MPO  
Rockford Metropolitan Agency for Planning (RMAP)  
Village of Roscoe Engineering

8. Scheduling of Future Meetings of the Policy and Technical Committees

9. Adjournment

*This meeting is accessible to disabled individuals. Persons planning to attend this meeting who will need a sign language interpreter or other similar accommodations should notify, either by telephone or letter or e-mail, to T.J. Nee, MPO Coordinator, Engineering Division, 2400 Springbrook Court, Beloit, WI 53511, telephone 608-364-6702, e-mail neet@ci.beloit.wi.us or the MPO Executive Secretary 608-364-6690 at least five days prior to the meeting so that reasonable accommodation can be made. Please make sure you get a positive response from someone and your request does not get left on message waiting or in an e-mail mailbox. Thank you for your cooperation. We want to assure we are responsive to people's needs.*

*Para mas informacion, a esta interesado en participar en el planeamiento del proceso de transporte en su comunidad y necesita asistencia con idioma, por favor comuniquese 608-364-6724.*



**Minutes**  
**Technical and Policy Advisory Committees**  
**Stateline Area Transportation Study**  
**Monday, October 28, 2013 10 a.m.**  
**Rotary River Center**  
**Beloit, Wisconsin**

A meeting of the Stateline Area Transportation Study's Technical and Policy Advisory Committees was held on Monday, October 28, 2013 at the Rotary River Center. Mike Flesch called the meeting to order at 10:09, a.m.

**1. Roll Call**

Policy Committee Members Present (7): Schoonover, Boysen (for Kincaid), McKearn (for Wilson), Hecox (for Jencius), Pritcher, Vlk (for Christensen), Tobin (for Loete).

Policy Committee Members Absent (3): Adams, Anclam, Olson.

Technical Committee Members Present (8): Flesch, McKearn (for Wilson), Boysen, Schoonover, Pritcher, Tobin (for Long), Vlk (for Vanderwerff), Hecox.

Technical Committee Members Absent (6): Marcos, Robb, Nygren, Bernardi, Gavin, Birkholz.

Non-Voting Members Present (1): Hren.

Others present: Soltau, Dupuis and Gill.

**2. Citizen Participation.**

None.

**3. Minutes of the Meetings of July 15, 2013 and September 30, 2013 – Action required by Technical and Policy Committee.**

A motion was made by McKearn, second by Tobin, to approve the minutes of the meetings of July 15, 2013 and September 30, 2013. Motion passed.

**4. Amendment to the 2013 Transportation Improvement Program – Action required by the Technical and Policy Committees to pass the Resolution.**

Soltau gave the staff report. The IL 2/Roscoe Road project is going from \$5.5 M to \$7.2M which requires a TIP Amendment. Elements of the project may be

let during 2013, so an amendment is needed for this year as well as 2014. Tobin said it will make the letting for this year. Tobin said the limits of the project will tie into where the four lanes are north of the project. It will improve the sight distance. She said it is the best footprint so less will be ripped out when the four lanes are completed in that area. Alignment will be shifting to the east. Hren said RMAP passed an amendment to their TIP last week since this project is on the border. Flesch said it is covered in both arenas.

A motion was made by Vlk, second by Tobin, for the Technical Committee to recommend to the Policy Committee acceptance of the Amendment to the 2013 Transportation Improvement Program. Motion passed.

A motion was made by Tobin, second by Schoonover, for the Policy Committee to accept the recommendation of the Technical Committee to approve the Amendment to the 2013 Transportation Improvement Program. Motion passed.

**5. Final 2014 Unified Work Program - Action Required by Technical and Policy Committees to pass Resolution.**

Soltau gave the staff report. Wisconsin funding is up a little bit, so the amount of matching funds will not be as much as anticipated. State of Illinois monies cannot be used for more than 10% on a project, which will change amounts to increase for local governments. The study on bikeways for South Beloit will be fully matched by State of Illinois money with no required local match. The cost will be \$25,000 for the study. Funding has to be fully utilized during the calendar year.

A motion was made by McKearn, second by Hecox, for the Technical Committee to recommend the Policy Committee accept the Final 2014 Unified Work Program. Motion passed.

Schoonover made a motion, second by Tobin, for the Policy Committee to accept the recommendation of the Technical Committee and approve the Final 2014 Unified Work Program. Motion passed.

**6. Final 2014 Transportation Improvement Program – Action Required by Technical and Policy Committees to Pass Resolution.**

Soltau gave the staff report. The only change to the TIP is, as was discussed at the last SLATS meeting, that Rock County is identified as the lead agency for the Rock County Highway G project, which is an interstate related project. Soltau said that was the only change made.

Tobin made a motion, second by McKearn, for the Technical Committee to recommend to the Policy Committee acceptance of the Final 2014 Transportation Improvement Program. Motion passed.

Schoonover made a motion, second by Vlk, for the Policy Committee to accept the recommendation of the Technical Committee to approve the Final 2014 Transportation Improvement Program. Motion passed.

## **7. Technical Agency Reports:**

Winnebago Highway Department – Design continues on Old River Road.  
Town of Beloit – Overlays and culvert replacements happening.  
Stateline Mass Transit District – Shot their first commercial. Looking to involve the 17-54 age market.  
RMAP – ITEP reviews and hoping to wrap up functional classification of roadways.

## **8. Scheduling of Future Meetings of the Technical and Policy Committees**

This will be Soltau's last meeting. He is retiring and moving to Florida in mid-November. Flesch and Dupuis will be filling in until a new person is hired for the position. It will be filled no later than the first quarter of 2014. Flesch thanked Soltau for his years of service and said he will be missed.

There will be a joint meeting of the Policy and Technical Committees during the first quarter of 2014.

## **9. Adjourn**

Tobin moved to adjourn, second by Vlk. Motion carried. Meeting adjourned at 10:25 a.m.

Colleen Gill  
Administrative Assistant 1  
Department of Public Works  
City of Beloit



## SLATS RESOLUTION 2014-1 AMENDMENT TO THE 2014 TRANSPORTATION IMPROVEMENT PROGRAM

**WHEREAS**, the **Stateline Area Transportation Study** is the Metropolitan Planning Organization for the Beloit (WI-IL) Urbanized Area and the greater Stateline Metropolitan Planning Area (MPA); and

**WHEREAS**, the **SLATS Policy Committee** has the responsibility to direct, coordinate, and administer the transportation planning process throughout the MPA; and

**WHEREAS**, the Federal Highway Administration and Federal Transit Administration, 23 U.S.C. 134 and 49 U.S.C. 5303-5306, have determined the necessity for the **SLATS 2014-2017 Transportation Improvement Program (SLATS 2014 TIP)**; and

**WHEREAS**, the SLATS Policy Committee formally adopted the **SLATS 2014 TIP (October 8, 2013 Version) on October 28, 2013**; and

**WHEREAS**, subsequent recent changes in funding availabilities and priorities and other factors now necessitate changes to the aforesaid adopted TIP; and

**WHEREAS**, said recent changes have been presented to the SLATS Technical Committee, area transportation planning and programming stakeholders, and the general public in accordance with the **SLATS Public Involvement Plan**; and

**WHEREAS**, the changes proposed to the TIP are as follows:

1. The TIP # for the City of Beloit project to resurface Henry Ave. from Park Ave. to Royce is changed from 291-14-001 to 291-14-007 (the first number was mistakenly assigned to two projects);
2. Three new projects are added by the State of Wisconsin: a resurfacing of a portion of US-51, a signal replacement at US-51 and Co-Q, the inclusion of Traffic OPS at various locations region-wide;
3. The three Rock County projects are revised to provide additional funding to various portions where needed, including additional ROW acquisition costs, additional costs for utility re-locations and related work, and additional funding for actual construction;
4. The Town of Beloit Sidewalk on Inman Parkway project is reprogrammed from 2015 to 2016;
5. The City of South Beloit Wheeler Ave Bike Path Project is changed to Advanced Construction Status;
6. The specific details of the above changes are listed in **Addendum A** to this Resolution; and

**WHEREAS**, the Policy Committee has reviewed the proposed changes and, to the best of their knowledge, finds :

1. The changes/projects are consistent with the adopted SLATS Long-Range Transportation Plan;
2. The cost estimates are reasonably accurate based on accepted construction cost estimating practices, and where appropriate, have considered inflation for projects in the out years;
3. The States have assured that all Federal funds paired with projects in this TIP are available or reasonably expected to be available for those projects;
4. It is not the intent of this Amendment to change any other aspects of the SLATS 2014 TIP as adopted on October 28, 2013 and no other projects are affected by these changes; and

**NOW, THEREFORE, BE IT RESOLVED** that the **SLATS Policy Committee** adopts this Amendment to the 2014 TIP as detailed by **Addendum A**, to be hereafter referred to as the **April 2014 Amendment**; and

**BE IT FURTHER RESOLVED** the Policy Committee directs the staff to incorporate this Amendment into the main tables and charts of the SLATS 2014 TIP (along with any non-substantive clerical corrections and formatting improvements deemed appropriate by staff) and submit the fully-updated document to the Federal Highway Administration, Federal Transit Administration and the Wisconsin and Illinois Departments of Transportation.

Adopted this 14th Day of April, 2014

**ATTESTS:**

---

**Chairman, SLATS Policy Committee**

---

**Chairman, SLATS Technical Committee or  
SLATS Planning Coordinator**



**Amended Parts** **Table 1 - PART A: Project Descriptions** **Table 1 - Part B: Project History, Progress & Prospectus**

Project quick reference #	Lead Agent	THESE AMENDMENTS ARE FISCALLY CONSTRAINED - FUNDING IS COMMITTED AS SHOWN			Location	Description	Total \$ (Estimated)	ACTIVITY PRIOR TO 2014 (\$1,000s)					Total	Comments, Change, & Amendment Notes			
		TIP #	State Project #s	Name				Codes (see accompanying table)	Fed	State	Local	Source			Total		
<b>April 14, 2014 AMENDMENT</b>																	
<b>I CITY OF BELLOIT</b>																	
Shaded areas and/or black type, as adopted Oct. 28, 2013																	
02	CBeI	291-14-001		Henry Ave	Park Ave - Royce	Resurface	\$ 450,000	L	RD	D	CON	-	-	-	-	New in 2014 TIP	
02	CBeI	291-14-007		Henry Ave	Park Ave - Royce	Resurface	\$ 450,000	L	RD	D	CON	-	-	-	-	TIP # Corrected to remove duplication.	
<b>II STATE OF WISCONSIN</b>																	
These Projects added - All other WI Projects remain as adopted on Oct. 28, 2013																	
39a	WI	291-14-004	5350-01-0373	US-51	Cranston Rd to WI-11	Mill & overlay	\$ 750,000	S	RD	D	PE					Project added 4/2014. CON in 2020 w/possible advancement to 2018.	
39b	WI	291-14-005	3700-10-01	US-51 / Co-Q	Intersection	Signal replacement	\$ 100,000	S	RD	TSM	PE					Project added 4/2014. CON not yet programmed.	
39c	WI	291-14-006	3700-10-00	SW Region Traffic OPS	Regionwide locations	MIS/Consultant Services 2014	\$ 50,000	S	RD	TSM	PE					Project added 4/2014.	
<b>IV ROCK COUNTY WISCONSIN</b>																	
Shaded areas and/or black type, as adopted Oct. 28, 2013																	
Red type are April 2014 Amendments																	
54	RCO	291-06-007	5989-05-2140/71	Inman Pkwy (Rock Co lead w/ City Beloit part.)	Prairie Ave to Shopiere Rd	New roadway	\$ 582,900	L	RD	W	PE	430	D	153	76	583	PE Cost estimates adjusted based on 6/26/12 chart from Rock County. Local funds reduced to \$369K as per chart. Local funding split between Rock Co & Beloit in same proportions as prior to the chart. Possible that all funds are expected from Beloit??
	RCO	291-06-007	5989-05-2140/4142/43/44	Inman Pkwy (Rock Co lead w/ City Beloit part.)	Prairie Ave to Shopiere Rd	New roadway	\$ 76,000	L	RD	W	PE	-	-	76	cb	76	PE Cost estimates adjusted based on 6/26/12 chart from Rock County. Local funds reduced to \$369K as per chart. Local funding split between Rock Co & Beloit in same proportions as prior to the chart. Possible that all funds are expected from Beloit??
	RCO	291-06-007	5989-05-2140/4142/43/44	Inman Pkwy (Rock Co lead w/ City Beloit part.)	Prairie Ave to Shopiere Rd	New roadway	\$ 93,000	L	RD	W	PE	-	-	93	rc	93	PE Cost estimates updated (reduced by \$63K) & cost divided 70/30 State/local. Divided into 4 utility subparts with ids added.
	RCO	291-06-007	5989-05-2140/4142/43/44	Inman Pkwy (Rock Co lead w/ City Beloit part.)	Prairie Ave to Shopiere Rd	New roadway	\$ 48,000	L	RD	W	PE	-	-	48	cb	48	ROW cost est increased by \$85K and assigned as 100% local (no State). Scheduled for 2014.
	RCO	291-06-007	5989-05-2140/4142/43/44	Inman Pkwy (Rock Co lead w/ City Beloit part.)	Prairie Ave to Shopiere Rd	New roadway	\$ 785,000	L	RD	W	PE	-	-	48	cb	48	Utility estimates updated (reduced by \$63K) & cost divided 70/30 State/local. Divided into 4 utility subparts with ids added.
	RCO	291-06-007	5989-05-2140/4142/43/44	Inman Pkwy (Rock Co lead w/ City Beloit part.)	Prairie Ave to Shopiere Rd	New roadway	\$ 37,000	L	RD	W	UTL	-	-	-	-	-	CON cost est increased by \$216K. Now partially funding with Urban STP. State & local amounts slightly reduced.
	RCO	291-06-007	5989-05-2140/4142/43/44	Inman Pkwy (Rock Co lead w/ City Beloit part.)	Prairie Ave to Shopiere Rd	New roadway	\$ 4,716,000	L	RD	W	CON	430	D	153	76	583	ROW cost est increased by \$85K and assigned as 100% local (no State). Scheduled for 2014.
	RCO	291-06-007	5989-05-2140/4142/43/44	Inman Pkwy (Rock Co lead w/ City Beloit part.)	Prairie Ave to Shopiere Rd	New roadway	\$ 6,337,900	L	RD	W	CON	430	D	153	76	583	Utility estimates updated (reduced by \$63K) & cost divided 70/30 State/local. Divided into 4 utility subparts with ids added.
	RCO	291-06-007	5989-05-2140/4142/43/44	Inman Pkwy (Rock Co lead w/ City Beloit part.)	Prairie Ave to Shopiere Rd	New roadway	\$ 4,716,000	L	RD	W	CON	430	D	153	76	583	CON cost est increased by \$216K. Now partially funding with Urban STP. State & local amounts slightly reduced.





**Amended Parts** **Table 1 - PART A: Project Descriptions** **Table 1 - Part B: Project History, Progress & Prospectus**

Project quick reference #	Lead Agent	THESE AMENDMENTS ARE FISCALLY CONSTRAINED - FUNDING IS COMMITTED AS SHOWN			Location	Description	Total \$ (Estimated)	Codes (see accompanying table)					ACTIVITY PRIOR TO 2014 (\$1,000s)					See Part C for 2014-2017 funding/programming	Comments, Change, & Amendment Notes
		TIP #	State Project #s	Name				\$ Sources	Mode	Purpose	Phase	Fed	State	Local	Total	Fed	State		
55	RCO	291-08-001; 371-09-008;	5966-00-007273	Co-G / Townline Rd Intersection (with Janeville MIPA)	Reconstruction & improvement of the intersection including turn lanes, approaches & signalization	\$ 375,000	FL	RD	UR	UR	UR	UR	320	SR	-	80	RC	400	PE Cost estimate adjusted upward as per 6/26/12 chart from Rock County.
							SL	RD	UR	UR	UR	UR	-	263	WI	112	RC	375	ROW acquisition will be by local land ants in excess of 50% shall be applied elsewhere in the budget.
55 Amended	RCO	291-08-001; 371-09-008; Utility ids added	5966-00-007273	Townline Rd Intersection (with Janeville MIPA)	Reconstruction & improvement of the intersection including turn lanes, approaches & signalization	\$ 400,000	FL	RD	UR	UR	UR	UR	320	SR	-	80	RC	400	PE Cost estimate adjusted upward as per 6/26/12 chart from Rock County.
							SL	RD	UR	UR	UR	UR	-	263	WI	112	RC	375	ROW cost est increased by \$231K and will now be 100% local in 2014.
55a Amended	RCO	291-12-10	5966-10-0140770	Co-G	Beloit to Janeville, Huebke Prky to WI-11	\$ 802,000	PE	RD	UR	UR	UR	UR	-	561	WI	241	RC	802	Construction originally programmed for 2015 but advanced to be obligated in 2014 & built in 2015 by 2014 TIP. Advancement achieved by infusion of \$612K in Federal (SA) funds, \$802 State, & \$412K County in 2014. Total project cost increased from \$1,714M to \$1,826M by 2014 TIP. Total CON cost increased by \$3,535M (4/2014) through infusion of additional State & Local funds.
							UTL	RD	UR	UR	UR	UR	-	-	-	-	-	-	-
55a Amended	RCO	291-12-10	5966-10-0140770	Co-G	Beloit to Janeville, Huebke Prky to WI-11	\$ 13,739,000	PE	RD	UR	UR	UR	UR	-	561	WI	241	RC	802	Design obligated in 2012 and underway. 1st adopted version of 2013 TIP increased total cost from \$802K to \$13.7M State & Local. Construction obligated in 2014, to be built 2014 & 2015.
							UTL	RD	UR	UR	UR	UR	-	-	-	-	-	-	Design obligated in 2012 and underway. 1st adopted version of 2013 TIP increased total cost from \$802K to \$13.7M State & Local. Construction obligated in 2014, to be built 2014 & 2015.
55a Amended	RCO	291-12-10	5966-10-0140770	Co-G	Beloit to Janeville, Huebke Prky to WI-11	\$ 15,005,000	PE	RD	UR	UR	UR	UR	-	561	WI	241	RC	802	Design obligated in 2012 and underway. 1st adopted version of 2013 TIP increased total cost from \$802K to \$13.7M State & Local. Construction obligated in 2014, to be built 2014 & 2015.
							UTL	RD	UR	UR	UR	UR	-	-	-	-	-	-	Design obligated in 2012 and underway. 1st adopted version of 2013 TIP increased total cost from \$802K to \$13.7M State & Local. Construction obligated in 2014, to be built 2014 & 2015.
60	TBel	291-11-004	5989-00-11/12	Sidewalk on Inman Prky	Riverside to Prairie	\$ 347,000	PE	RD	UR	UR	UR	UR	48	SS	-	-	-	48	Utility work moved from 2013 to 2014 by July 2013 Amendment.
							CON	RD	UR	UR	UR	UR	-	-	-	-	-	-	Utility cost est increased by \$261K 4/2014. CON cost increased by \$498K thru infusion of NHPP, State & Local funds (4/2014).
60 Amended	TBel	291-11-004	5989-00-11/12	Sidewalk on Inman Prky	Riverside to Prairie	\$ 347,000	PE	RD	UR	UR	UR	UR	48	SS	-	-	-	48	Utility work moved from 2013 to 2014 by July 2013 Amendment.
							CON	RD	UR	UR	UR	UR	-	-	-	-	-	-	Utility cost est increased by \$261K 4/2014. CON cost increased by \$498K thru infusion of NHPP, State & Local funds (4/2014).
X	CITY OF SOUTHBELT ILLINOIS				Shaded areas and/or black type as adopted Oct. 28, 2013		PE	RD	UR	UR	UR	UR	-	-	-	-	-	-	Utility work moved from 2013 to 2014 by July 2013 Amendment.
							CON	RD	UR	UR	UR	UR	-	-	-	-	-	-	-
67	SBel	02-13-002		South Beloit Bike Path	New bike path connection via the Wheeler Ave Brdg over Turtle Crk.	\$ 546,563	PE	RD	UR	UR	UR	UR	87	EN	-	22	sb	109	Design obligated in 2012. Construction moved to 2015 by the July 2013 Amendment.
							CON	RD	UR	UR	UR	UR	-	-	-	-	-	-	-
67	SBel	02-13-002		South Beloit Bike Path	New bike path connection via the Wheeler Ave Brdg over Turtle Crk.	\$ 546,563	PE	RD	UR	UR	UR	UR	87	EN	-	22	sb	109	Design obligated in 2012. Construction moved to 2015 by the July 2013 Amendment.
							CON	RD	UR	UR	UR	UR	-	-	-	-	-	-	-
X	CITY OF SOUTHBELT ILLINOIS				Shaded areas and/or black type as adopted Oct. 28, 2013		PE	RD	UR	UR	UR	UR	-	-	-	-	-	-	Utility work moved from 2013 to 2014 by July 2013 Amendment.
							CON	RD	UR	UR	UR	UR	-	-	-	-	-	-	-

Amended Parts

Table 1 - PART C: Proposed 4-Year Program of New and Continued Projects

SLATS 2014 TIP April 1a 2014 Amended Parts.xlsm

Project quick reference #	Lead Agent	2014			2015			2016			2017						
		14 Fed source	14 State source	14 Local source	14 Total	15 Fed source	15 State source	15 Local source	15 Total	16 Fed source	16 State source	16 Local source	16 Total	17 Fed source	17 State source	17 Local source	17 Total
<p><b>Cost below are in 1000s of dollars.</b> See attached Table 1A for SOURCE codes. Funding amts are OBLIGATED in Year 2014; programmed in 2015-2017. A notation of "cont" indicates that some funding was allocated to the project in a previous year. See PARTs A and B for information on previous funding obligations.</p>																	
55	RCO	-	-	-	-	-	-	-	-	-	-	-	-	-	-	-	-
		612 SA	802 WI	412 RC	1,826												
55 Amended	RCO	-	-	-	-	-	-	-	-	-	-	-	-	-	-	-	-
		612 SA	3,276 WI	1,473 RC	5,361												
			316 WI	135 RC	451												
			606 RC	606													
55a	RCO	-	-	-	-	-	-	-	-	-	-	-	-	-	-	-	-
		cont'	cont'	cont'	cont'												
			70 WI	30 RC	100												
			7,664 WI	5,173 RC	12,837												
55a Amended	RCO	-	-	-	-	-	-	-	-	-	-	-	-	-	-	-	-
		cont'	cont'	cont'	cont'												
			555 N H P	7,902 WI	4,878 RC	13,335											
			253 WI	108 RC	361												
			507 RC	507													
VII		BLOTT TOWN WISCONSIN															
		Shaded area and/or black type, as adopted Oct. 28, 2013															
		Red type is April 2014 Amendments															
60	TBel	-	-	-	-	-	-	-	-	-	-	-	-	-	-	-	-
			299 SS		299												
60 Amended	TBel	-	-	-	-	-	-	-	-	-	-	-	-	-	-	-	-
			299 SS		299												
X		CITY OF SOUTH BLOTT ILLINOIS															
		Shaded area and/or black type, as adopted Oct. 28, 2013															
		Red type is April 2014 Amendments															
67	SBel	-	-	-	-	-	-	-	-	-	-	-	-	-	-	-	-



**SLATS RESOLUTION 2014-2: AMENDMENT TO THE  
SLATS AUA/MPA BOUNDARY MAP**

**WHEREAS**, the Federal Highway Act of 1962 and the Urban Mass Transportation Act of 1964 as amended, and most recently extended by the Moving Ahead for Progress in the 21<sup>st</sup> Century Act (MAP-21), require and provide for an urban transportation planning process in all sizable metropolitan areas throughout the Country; and

**WHEREAS**, the Stateline Area Transportation Study (SLATS) is the Metropolitan Planning Organization duly designated to carry out said planning process for the area within and in the vicinity of the Beloit (WI-IL) Urbanized Area (Beloit UA), as delineated by the U.S. Census Bureau; and

**WHEREAS**, the SLATS Policy Committee has the responsibility to direct, coordinate, and administer said transportation planning process; and

**WHEREAS**, the SLATS Policy Committee (working in conjunction and cooperation with the Federal Highway Administration, the Federal Transit Administration, the Illinois Department of Transportation, and the Wisconsin Department of Transportation) is required to delineate two areas within which said planning process will be focused: a Metropolitan Planning Area (MPA) and an Adjusted Urbanized Area (AUA); and

**WHEREAS**, the MPA is to encompass a continuous area in the vicinity of the Beloit UA that has strong potential to become developed or urbanized within roughly the next two decades and the AUA is to encompass those lands that have a strong potential to become urbanized within the more immediate future (i.e.. the 5-10 years); and

**WHEREAS**, in February of 2013, in response to data from the 2010 Census, the SLATS Policy Committee revised the MPA and AUA boundaries (previously adopted in 2002) and submitted the new 2013 MPA and AUA boundaries to the other stakeholders for review; and

**WHEREAS**, the Illinois Department of Transportation (IDOT) has now suggested a change/expansion to the 2013 AUA boundary, moving the southeast corner of the AUA further south and eastward to correspond with the SLATS MPA boundary along Roscoe and Sprague Roads, as illustrated in **ADDENDUM A**, attached to this Resolution; and

**WHEREAS**, said IDOT AUA change/expansion has been presented to the SLATS Technical Committee, area transportation planning and programming stakeholders, and the general public in accordance with the SLATS Public Involvement Plan; and

**WHEREAS**, the SLATS Technical Committee has reviewed the suggested AUA expansion and concurs that this area has the potential for development within the next 5-10 years; and

**WHEREAS**, the SLATS Policy Committee has reviewed the proposed AUA expansion and considers the expansion reasonable and appropriate;

**NOW, THEREFORE, BE IT RESOLVED** that the SLATS Policy Committee amends the SLATS AUA, (previously adopted in February of 2013) to include the expansion described above and illustrated in **ADDENDUM A**; and

**BE IT FURTHER RESOLVED** the Policy Committee directs the staff to incorporate this Amendment into the full SLATS AUA and MPA maps, to be dated April 14, 2014; submit this document and the fully-updated maps to the appropriate Federal and State agencies; and incorporate the updated MPA and AUA Maps into future document as needed.

Adopted this 14th Day of April, 2014

ATTESTS:

---

Chairman, SLATS Policy Committee

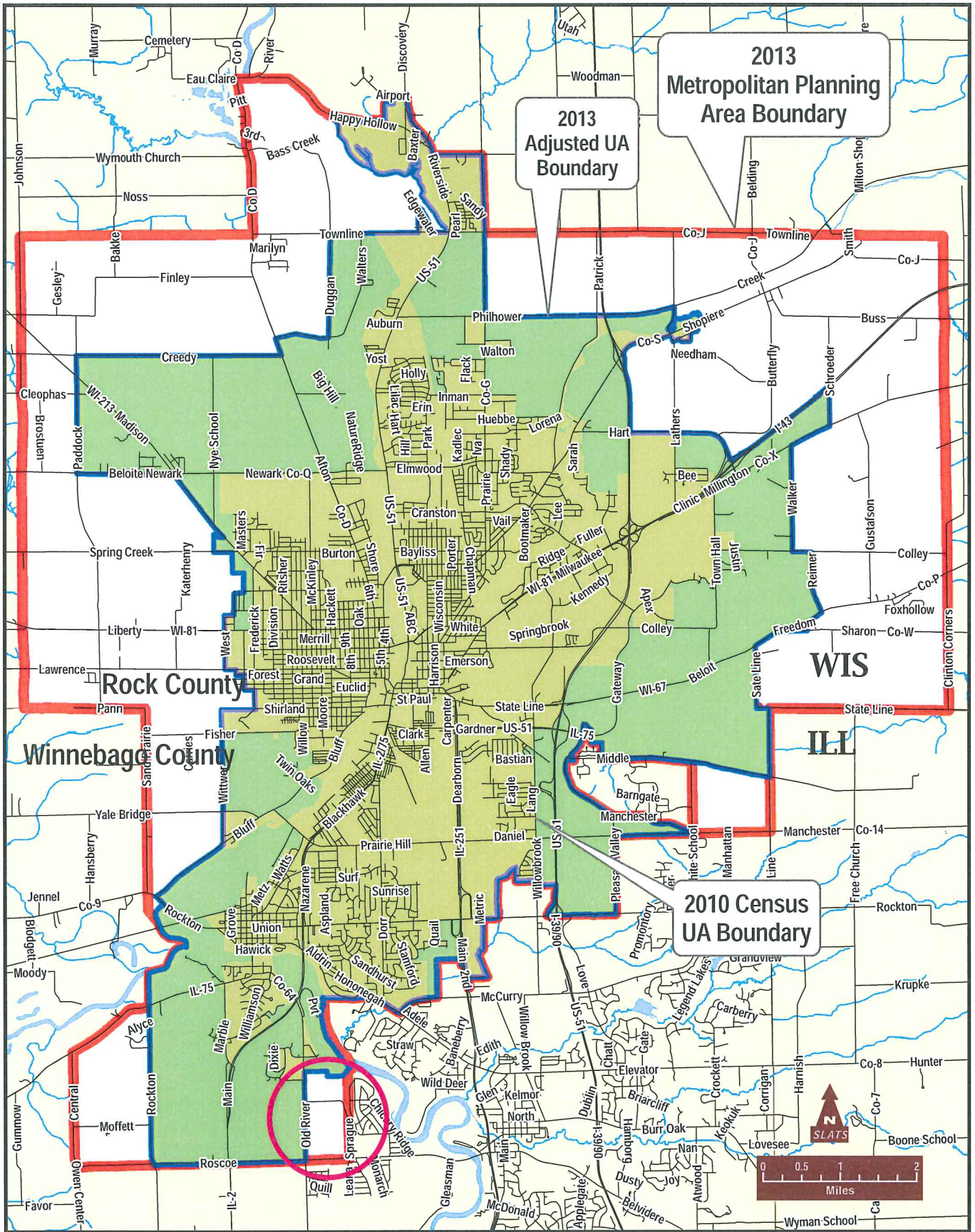
---

Chairman, SLATS Technical Committee or  
SLATS Planning Coordinator



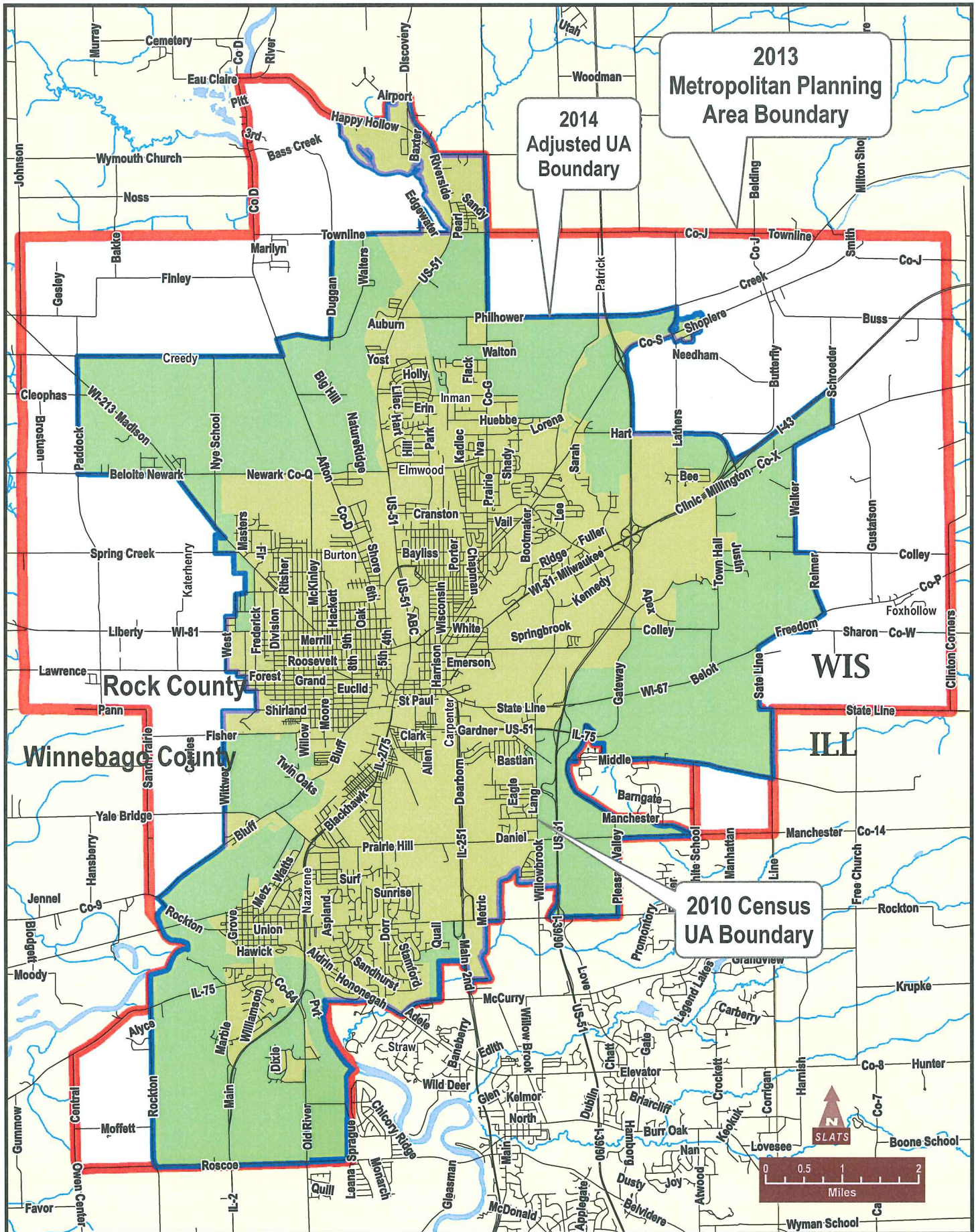
Stateline Area Transportation Study -- Metropolitan Planning Organization

SLATS 2013 METROPOLITAN PLANNING AREA (Adopted on February 25, 2013)





SLATS 2014 METROPOLITAN PLANNING AREA (Adopted on April 14, 2014)





**SLATS RESOLUTION 2014-3  
ADOPTING CHANGES TO THE SOUTH BELOIT AREA  
FUNCTIONAL CLASSIFICATION SYSTEM**

**WHEREAS**, the **Stateline Area Transportation Study** is the Metropolitan Planning Organization for the Beloit (WI-IL) Urbanized Area and the greater Stateline Metropolitan Planning Area (MPA); and

**WHEREAS**, the **SLATS Policy Committee** has the responsibility to direct, coordinate, and administer the transportation planning process throughout the MPA; and

**WHEREAS**, the Federal Highway Administration has issued guidance related to the development of functional classification systems within a certain period of time after approval of the adjusted urban area boundary (AUA); and

**WHEREAS**, the SLATS Policy Committee had previously adopted the South Beloit Urban Area Functional Classification Map in 2003; and

**WHEREAS**, the SLATS Policy Committee formally adopted the amended AUA on April 14, 2014; and

**WHEREAS**, the Illinois Department of transportation (IDOT) has submitted changes to the functional classification system within SLATS for review and approval; and

**WHEREAS**, said recent changes have been presented to the SLATS Technical Committee, area transportation planning and programming stakeholders, and the general public in accordance with the **SLATS Public Involvement Plan**; and

**WHEREAS**, the changes proposed to the functional classification system are as follows:

1. Prairie Hill Road/Manchester Road from Willowbrook Road to the Boone County Line - changed from Minor Arterial to Major Collector;
2. Rockton Road from I90 NB ramps to White School Road – changed from Minor Arterial to Major Collector;
3. Il-75 from Urban limit to Il-2 – changed from Other Arterial to Minor Arterial;
4. Yale Bridge Road from Wittwer Road to South Bluff Road – changed from Minor Arterial to Major Collector;
5. Park Avenue from Il-75 to Eastern Avenue – changed from Minor Arterial to Major Collector; and

**WHEREAS**, the Policy Committee has reviewed the proposed changes and, to the best of their knowledge, finds:

1. The proposed changes are consistent with the Federal Highway Administration’s guidance;
2. The proposed changes are consistent with the Illinois Department of Transportation’s recommendations and justifications as detailed on the Rockford/South Beloit Functional classification Update Submittal Form;
3. It is not the intent of this Resolution to change any other aspects of the SLATS Long Range Plan as adopted on September 11, 2006 and 2011 update; and

**NOW, THEREFORE, BE IT RESOLVED** that the **SLATS Policy Committee** adopts the **South Beloit Urban Area Functional Classification Map** dated **April 14, 2014**; and

**BE IT FURTHER RESOLVED** the Policy Committee directs the staff to incorporate this map into the SLATS 2035 Long-Range Transportation Plan and 2011 Update of the 2035 Long-Range Transportation Plan documents (along with any non-substantive clerical corrections and formatting improvements deemed appropriate by staff) and submit this resolution and adopted map to the Illinois Department of Transportation for approval .

Adopted this 14th Day of April, 2014

ATTESTS:

\_\_\_\_\_  
Chairman, SLATS Policy Committee

\_\_\_\_\_  
Chairman, SLATS Technical Committee or  
SLATS Planning Coordinator





# Illinois Department of Transportation

## Rockford/South Beloit Functional Classification Update Submittal Form

Map #	Inventory Number	Begin	End	Len	Road Name	From-To Location	Old FC	Prop. FC	Justification	Jurisdiction	Maintenance	
WD06	101 95170 000000	0.00	0.09	0.09	Easton Pkwy	From Javelin Dr to Alpine Park Dr	5 - Major Collector	7 - Local Road	This road is a stub and does not connect two Functional Classified roads together, nor does it function as a "Collector".	Municipality	Municipality	
WD07	101 95151C000000	0.00	0.07	0.07	Arnold Ave	From Dead End to Harrison Ave	5 - Major Collector	7 - Local Road	This road is a stub and does not connect two Functional Classified roads together, nor does it function as a "Collector".	Municipality	Municipality	
		0.07	0.25	0.18								Township
		0.25	0.39	0.14								Municipality
1	101 99876 000000	3.59	6.62	3.03	Prairie Hill Rd/ Manchester Rd	From Willow Brook Rd to Boone County Line	4 - Minor Arterial	5 - Major Collector	System Continuity, Lower AADT (1200-1350)	County	County	
2	101 99878 000000	5.37	7.07	1.70	Rockton Rd	From I-90 NB Ramps to White School Rd	4 - Minor Arterial	5 - Major Collector	System Continuity, Lower AADT (1350-3000)	County	County	
3	101 99889 000000	1.72	1.91	0.19	Mc Curry Rd	From Willow Brook Rd (S) to Willow Brook Rd (N)	5 - Major Collector	4 - Minor Arterial	System Continuity	County	County	
4	004 30039 000000	0.00	4.61	4.61	Hunter Rd	From Winnebago County Line to IL-76	5 - Major Collector	4 - Minor Arterial	System Continuity, Higher AADT	County	County	
5	101 20505 000000	16.65	19.18	2.53	IL-75	From Urban Limit to IL-2	3 - Other Arterial	4 - Minor Arterial	System Continuity, lower AADT (2950-7800)	ID_T	ID_T	
6	101 99892 000000	0.00	0.49	0.49	Yale Bridge Rd	From Wittwer Rd to South Bluff Rd	4 - Minor Arterial	5 - Major Collector	System continuity, lower AADT (1800)	County	County	
7	004 95011 000000	0.00	1.00	1.00	Poplar Grove Rd	From Urban Limit to Grove St	4 - Minor Arterial	5 - Major Collector	System Continuity, lower AADT (1200)	Municipality	Municipality	
8	101 20301 000000	9.95	10.60	0.65	US-20	From State Street to Weldon Rd	3 - Other Arterial	2 - Freeway	System Continuity	ID_T	ID_T	



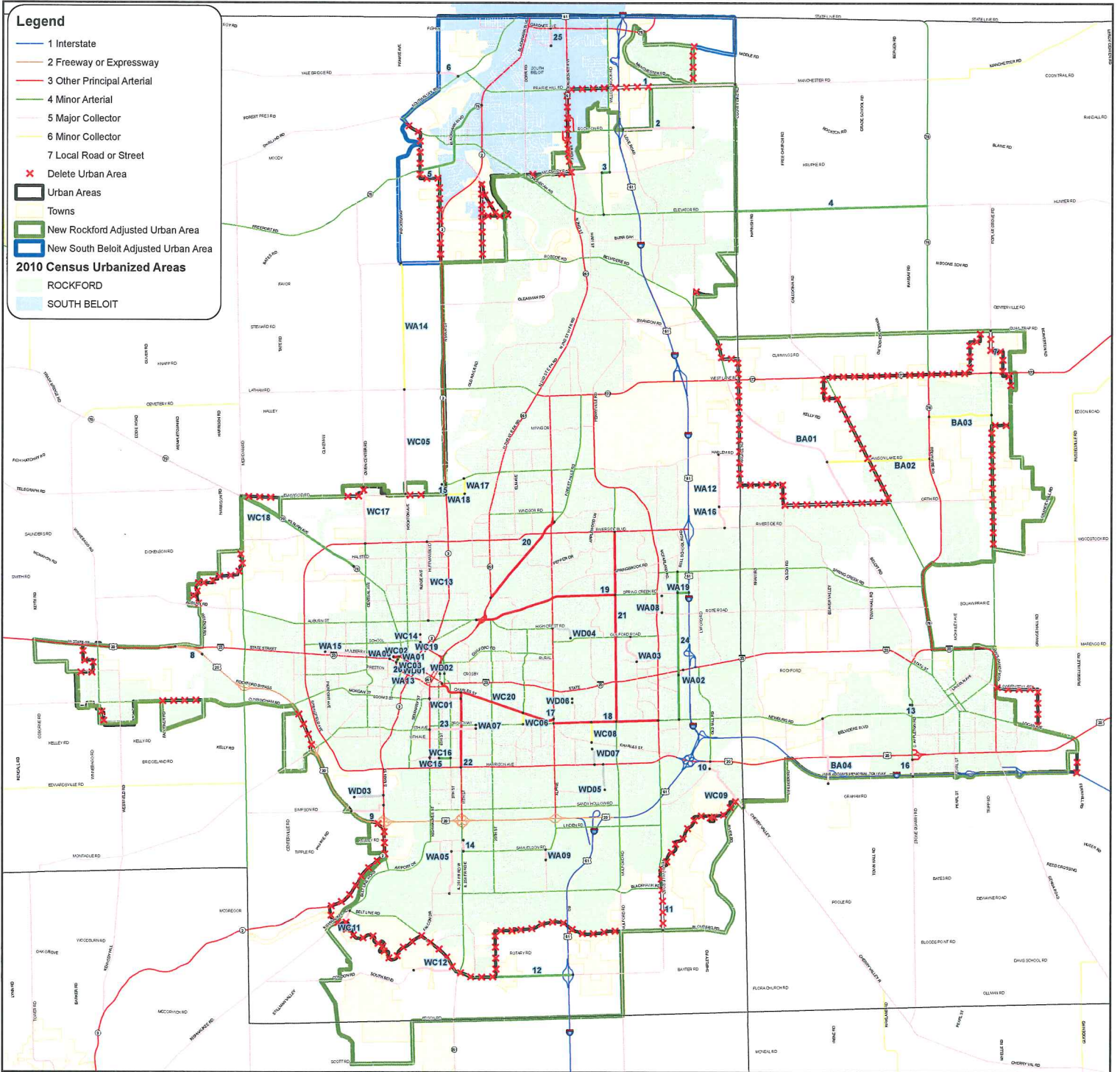
# Illinois Department of Transportation

## Rockford/South Beloit Functional Classification Update Submittal Form

Map #	Inventory Number	Begin	End	Len	Road Name	From-To Location	Old FC	Prop. FC	Justification	Jurisdiction	Maintenance	
20	101 95146 000000	4.55	4.92	0.37	Forest Hills Rd	From Colby Ln to IL-251	4 - Minor Arterial	3 - _ther Arterial	Very high AADT (16,300-20,000)	Municipality	Municipality	
		4.92	6.72	1.80								County
		6.72	7.06	0.34								ID _ T
21	101 95147 000000	1.07	5.53	4.46	Mulford Rd	From Riverside Blvd to Newburg Rd	4 - Minor Arterial	3 - _ther Arterial	Very High AADT (18,600-25,000)	Municipality	Municipality	
22	101 95129 000000	0.00	1.78	1.78	11th St	From Charles St to IL-251	4 - Minor Arterial	3 - _ther Arterial	Very High AADT (13,100-16,400), Characteristics similar to 11th St _ PA south of Harrison Ave.	Municipality	Municipality	
23	101 95082 000000	2.16	3.23	1.07	15th Ave	From IL-251 to 15th St	4 - Minor Arterial	5 - Major Collector	System Continuity - Parallel Minor Arterials, Lower AADT (1850-4450)	Municipality	Municipality	
24	101 95149 000000	1.05	3.37	2.32	Bell School Road	From _ Ide Creek Rd to Newburg Rd	5 - Major Collector	4 - Minor Arterial	System Continuity (with WA19), High AADT (7,500-14,200)	Municipality	Municipality	
		3.37	3.73	0.36								County
		3.73	4.53	0.80								Municipality
25	101 99879 000000	0.28	0.70	0.42	Park Ave	From IL-75 to Eastern	4 - Minor Arterial	5 - Major Collector	System Continuity	Municipality	Municipality	
26	101 95110A000000	0.00	0.07	0.07	Court St	From Elm to US-20B	5 - Major Collector	6 - Minor Collector	System Continuity	Municipality	Municipality	



# Rockford & South Beloit Urban Area and Functional Classification Updates





# SOUTH BELOIT URBAN AREA FUNCTIONAL CLASSIFICATION MAP

