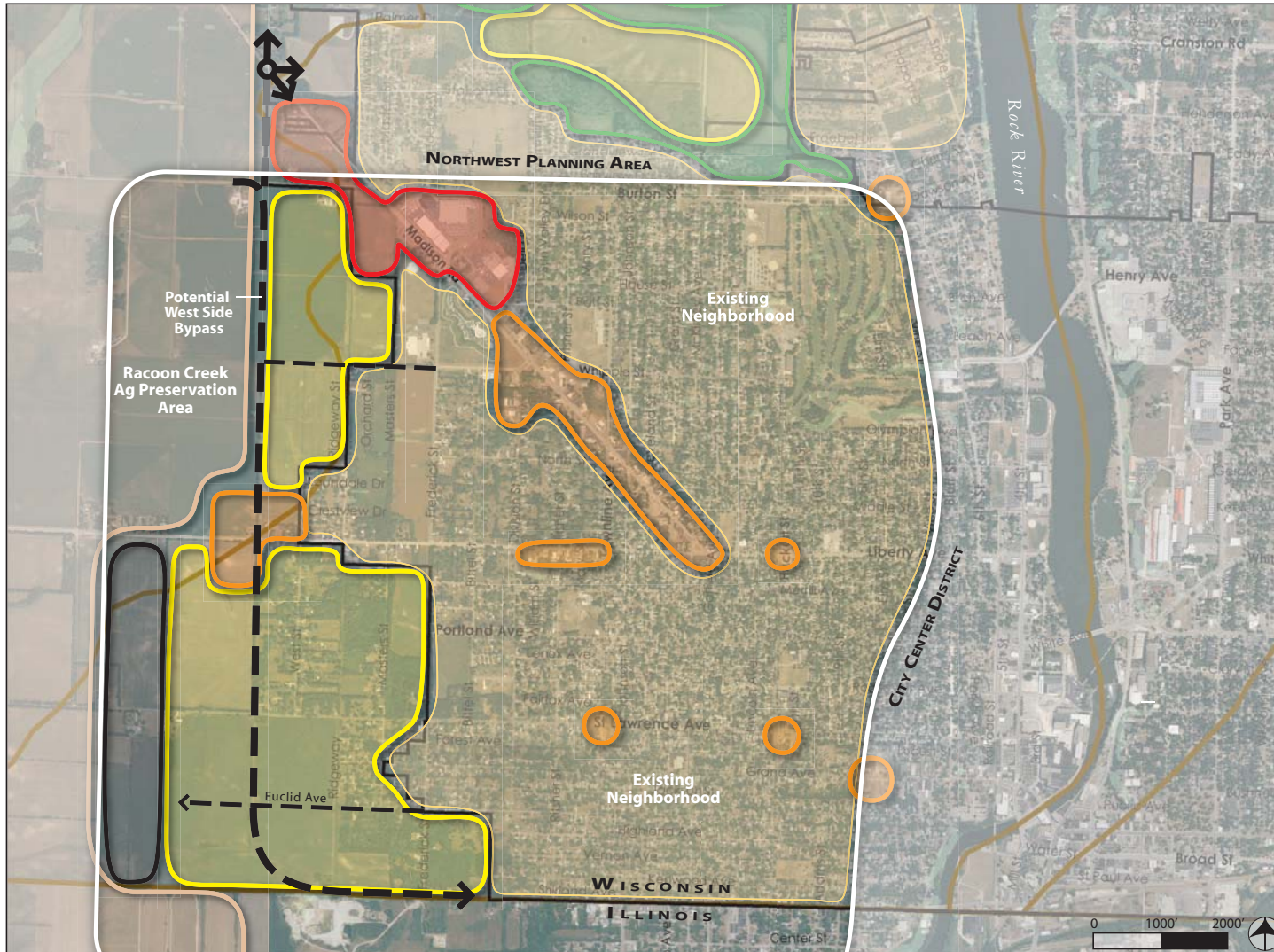


# Map 5e: WEST SIDE PLANNING AREA



## Opportunities

- Potential future bypass/new arterial redirects through traffic
- Bypass and watershed form natural long-term community boundary
- Focused mixed use and commercial development along Madison Road
- Neighborhood services at key intersections
- Revitalization of existing neighborhoods
- Sidewalks and lighting enhance pedestrian safety

## Conceptual Land Uses

- Community Commercial
- Neighborhood Commercial
- Employment (Industrial & Office)
- Mixed-Use
- Neighborhood (Mix of single-family, multi-family & neighborhood services)
- Green Corridors
- Long Range Urban Growth Area
- Potential Future Roads
- Watershed Boundaries

Note: This map is not a Detailed Future Land Use Map or Future Transportation Map for zoning and other decision making. The purpose of this map is to show conceptual future growth options and facilitate public discussion.